

**Rolle**<sub>Σ</sub>  
MEDICAL



Australia

**CATALOGUE**  
**2020 - 2021**



## Who We Are

Rollex Medical is a family based medical refrigeration and monitoring company operating throughout Australia and New Zealand with offices and warehouses in Sydney, Melbourne and Auckland.

We now build our patented MATOS® Medical Fridges in Europe which are shipped worldwide. Over the last six years we have developed and patented web based technology to keep meticulous and robust records in medical fridges. Our market leading MATOS® Cloud fridges also have a built in automatic rescue function should the fridge controller fail.

Our main focus and ethos is to create and maintain a total ongoing support package for our customers and ensure that we attend to requests in a timely and helpful way. Our friendly staff are always only a phone call away.

## What We Do

Rollex Medical are the exclusive Australasian distributors for MATOS®, LEC, and Angelantoni medical refrigerators, freezers, incubators and thermostatic chambers. Rollex are market leaders and the only medical refrigeration company that has been endorsed by the Pharmacy Guild of Australia for the last 12 consecutive years.

Endorsed by



The Pharmacy  
Guild of Australia

Combine this with our unique web based monitoring and data-logging products, alarm systems and second to none service and technical support for a total solution for your temperature sensitive storage needs.

We have traditionally sold to and serviced customers in the area of medical refrigeration. We have a large infrastructure throughout Australia and New Zealand to provide Australasian wide service.

## Why Choose Us?

Rollex Medical are Australia's biggest and most trusted supplier of Medical Refrigeration products. With over 15 years experience in the industry, we will help you procure the best cold-chain compliant medical fridge for your needs. We will look after you for the life of your fridge. With Rollex Medical, purchasing a fridge is the beginning of a long-lasting relationship.

We will help you gain and maintain Cold Chain Compliance. We provide an annual service as part of our preventative maintenance programme, and even teach you how to check up on this should you have concerns between services, with one of our affordable data-logging systems. We also provide a free 24 hour support line for any technical issues or questions.

# INDEX

Section 1 - MATOS° .....	5
What is MATOS° .....	6
Matos° PLUS Eco .....	7
Matos° PLUS Cloud .....	8
Matos° Monitoring.....	9
Matos° PLUS Refrigerators .....	10
Matos° PLUS Freezers .....	12
Matos° Thermostatic Chambers .....	14
Matos° ARIA Range .....	16
Section 2 - LEC MEDICAL .....	18
Introducing Lec Medical .....	19
Lec Freezers .....	20
Lec Pharmacy Range .....	21
Lec Laboratory Range .....	23
Section 3 - ANGELANTONI .....	25
Introducing Angelantoni .....	26
Angelantoni Ekobasic & Ekofrigolab Refrigerators .....	28
Angelantoni Ekobasic & Ekofrigolab Freezers.....	29
Angelantoni Underbench Units & Ekofrigolab Fridge/Freezers .....	30
Angelantoni Blood Bank Refrigerators .....	31
Angelantoni Platinum Freezers .....	32
Angelantoni Platinum Next Freezers.....	33
Angelantoni Platilab Freezers .....	34
Angelantoni Platilab Next Freezers.....	35
Angelantoni Iridium & Iridium Next Freezers .....	36
Angelantoni Irilab & Irilab Next Freezers .....	37
Angelantoni Plasmasfrost & Kryolab Freezers.....	38
Section 4 - DATA LOGGING & MONITORING .....	39
Matos° Wireless Monitoring (MWM) Kit .....	41
Retrofit Monitoring - Matos° M-310.....	42
Remote Monitoring - ControlByWeb.....	43
LogTag° Data Logging System .....	44
Rollog Temperature Monitor .....	46
Section 5 - MEDICAL CARE .....	47
Taurolock .....	48
Section 6 - AFTER SALES & ACCESSORIES .....	49
Preventative Maintenance .....	50
Battery Backup UPS .....	51
Outlet Surge Protectors.....	52



## The specialists for medical and pharmaceutical refrigeration

- Medical Refrigeration
- Vaccine Refrigeration
- Pharmaceutical Refrigeration
- Laboratory Refrigeration (spark free)
- Bloodbank Refrigeration
- Low Temperature Freezers
- Ultra Low Temperature Freezers



# SECTION 1

## MATOS®





## What is Matos®?

Matos® is a new range of purpose built Medical, Laboratory & Vaccination Refrigerators, Freezers and Thermostatic Chambers utilising internationally patented technology. The cabinet and componentry have been specially designed for use in the Medical field.

## Why choose Matos®?

The Matos® range of fridges and freezers are built to the highest specifications and feature fast cool-down, sophisticated PID microprocessor controller with clear LCD display, an auto-diagnostic function and an unique fan control for better temperature maintenance. We also offer models with Hot Gas Defrost and Stainless Steel interiors.

## What is Matos® Eco and Matos® Cloud?

The Matos® Eco range is manufactured in Europe to meet the highest standards, are energy efficient, have built-in fan management, locks fitted as standard, automatic defrost and come with solid or glass door options.

The Matos® Cloud is our premium range with the addition of our Data Acquisition & Transfer Module and Fridge Rescue System offering:

- Built-In Monitoring

Continuous temperature monitoring with email and optional SMS alerts ensures a robust complete monitoring record of your product even with loss of power.

- Thermostat Override

The patented control system ensures that in the event of a component failure, our Fridge Rescue System steps in and will keep the fridge within the optimum temperature range.

- Battery Backup

Our Matos® Cloud range include a smart, compact UPS built into the fridge so the temperature monitoring will continue during a power failure, ensuring an uninterrupted temperature log. (Backup time up to 36 hours). Automatic battery maintenance and smart-charging cycle ensures maximum battery life.



New Zealand: Patent 596323 | Australia: Patent 2012336431 | Europe: Patent 12846969.9

# matos® PLUS Eco

The Matos® PLUS Eco series are a new range of purpose built Medical and Vaccination Refrigerators, Freezers and Thermostatic Chambers. The cabinet and componentry have been specially designed for use in the Medical field.



Aluminium or Stainless Interior  
Modern Refrigeration Technology

## Key Features include:

- Fast cool down
  - Sophisticated microprocessor controller with clear LCD display
  - Auto-diagnostic function
  - Automatic defrost
  - Unique fan control for better temperature maintenance
  - Access Port as standard
  - Door lock as standard
  - Internal LED light
  - Glass door option available on most models
  - Temperature and door open alarms
  - Other options include Hot Gas Defrost and stainless steel interiors
- plus...

## 3 Year Extended Warranty

When serviced by an approved service technician, the warranty is extended to 3 years.



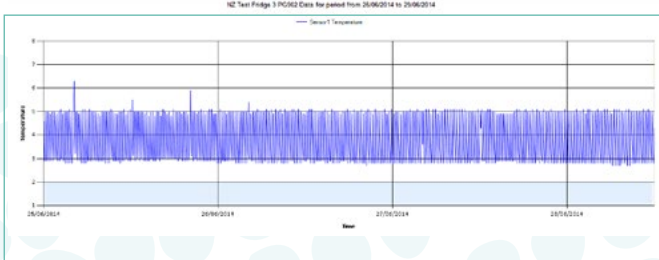
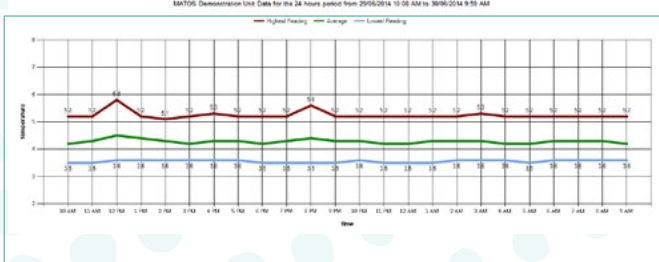
# matos® PLUS Cloud



The Matos® PLUS Cloud series includes all of the features of the Eco units, but with our unique, patented web monitoring and Fridge Rescue System.

## Additional Features include:

- In the event of a fridge component failure, the system will send an alert, bypass the fridge's own controller and automatically maintain temperature until an engineer can attend and rectify the problem. This feature is unique to us, patented and has already saved thousands of dollars worth of product which would otherwise have been destroyed throughout New Zealand and Australia
- Unique website login for each client
- Temperature and door status constantly monitored
- Alerts sent via the website to designated users in the event of an alarm
- Alarms include temperature too high or low, door open, power loss, data communication lost
- Optional monitoring is available for simulated sample temperature and external ambient temperature
- The monitoring unit has its own UPS backup and will store data for up to 36 hours in the event of a power loss
- If internet connectivity is lost, the unit will store all the data and automatically upload when connectivity is re-established
- All data is stored on the secure website for access at any time for compliance purposes
- Users can set up automated reports by email
- Unlimited free email alerts are included in the service
- SMS alerts are available as an optional extra if required.



New Zealand: Patent 596323 | Australia: Patent 2012336431 | Europe: Patent Pending 12846969.9



# **matos**<sup>®</sup>

## Monitoring

Matos<sup>®</sup> Monitoring is a web-based automatic temperature monitoring system, enabling direct access to your fridge temperatures and records, anywhere at any time.



### Dedicated Server

Matos<sup>®</sup> Monitoring features a dedicated, off-site secure server ensuring fast access speeds when information is critical.

### Email and SMS Alerting

Temperature excursions and status alarms are sent via email message and optional SMS message within seconds.

### Ease of Access

Access fridge temperatures and statuses from any web-capable device such as a computer, smartphone or tablet.

### Clear Concise Information

See temperature history and fridge status at a glance with easy to read colour coded indicators.

### Full Alert History

Complete alert history makes audit trails a breeze. See who has responded, what action was taken and when, with the click of a button.

### Automatic and Custom Reports

Get reports delivered direct to your email inbox or create custom PDF reports for any period.

### Wireless Capability

Internet connection via wired or secure wireless network.

### Robust Database

Double backup and RAID system ensures data is kept safe and secure for 10 years plus.

### Battery Backup

With smart compact UPS built into the fridge the temperature monitoring will continue during a power failure, ensuring an uninterrupted temperature log. (Backup time up to 36 hours).

Automatic battery maintenance and smart-charging cycle ensures maximum battery life.

### Outgoing Communication Only

As there are no incoming connections to the monitoring device the network security of your business is never compromised.

### Self Reporting/Analysing

Self monitored device ensures that any hardware problems are reported to the user ensuring a quick response.

Take a look at the Monitoring demonstration site [www.matosmonitoring.com](http://www.matosmonitoring.com) using the following:  
Username: matosdemo1 / Password: matosdemo1

# **PLUS Refrigerators**

The MATOS® PLUS Refrigerator series is a new range of purpose built Medical & Vaccination Refrigerators utilising patented



## Specifications

Standard features for all models	MATOS® Eco 68 R MATOS® Cloud 68 R	MATOS® Eco 150 R MATOS® Cloud 150 R	MATOS® Eco 200 R MATOS® Cloud 200 R	MATOS® Eco 250 R MATOS® Cloud 250 R	MATOS® Eco 300 R MATOS® Cloud 300 R
Description	On/Under-Bench	On/Under-Bench	Freestanding	Freestanding	Freestanding
Gross Capacity	68L	150L	200L	250L	300L
Dimensions External	570w x 680d x 600h	620w x 650d x 860h	620w x 650d x 1060h	620w x 650d x 1260h	620w x 650d x 1460h
Dimensions Internal	470w x 300d x 430h	520w x 420d x 660h	520w x 420d x 860h	520w x 420d x 1060h	520w x 420d x 1260h
Max shelf workload	10kg	10kg	10kg	10kg	10kg
Max unit workload	20kg	30kg	40kg	50kg	60kg
Door	Solid/Glass option	Solid/Glass option	Solid/Glass option	Solid/Glass option	Solid/Glass option
Weight	32kg	54kg	59kg	69kg	75kg
Shelves fit/max	2/2	3/4	3/4	4/6	5/7
Gas defrost	Optional	Optional	Optional	Optional	Optional
Door Style	Hinged	Hinged	Hinged	Hinged	Hinged
Door Open Sensor	Yes	Yes	Yes	Yes	Yes
Door Open Alarm	Yes	Yes	Yes	Yes	Yes
Lock	Yes	Yes	Yes	Yes	Yes
Castors	Optional	Optional	Optional	Yes	Yes
Air convection	Fan Forced Air	Fan Forced Air	Fan Forced Air	Fan Forced Air	Fan Forced Air
Controller	Microprocessor with LCD graphic display	Microprocessor with LCD graphic display	Microprocessor with LCD graphic display	Microprocessor with LCD graphic display	Microprocessor with LCD graphic display
Interior	Aluminium (s/steel optional)	Aluminium (s/steel optional)	Aluminium (s/steel optional)	Aluminium (s/steel optional)	Aluminium (s/steel optional)
Housing	Powder coated steel (s/steel optional)	Powder coated steel (s/steel optional)	Powder coated steel (s/steel optional)	Powder coated steel (s/steel optional)	Powder coated steel (s/steel optional)
Colour	White/Teal	White/Teal	White/Teal	White/Teal	White/Teal
Temperature Range	0°C to +15°C	0°C to +15°C	0°C to +15°C	0°C to +15°C	0°C to +15°C
Temperature Resolution	0.1°C	0.1°C	0.1°C	0.1°C	0.1°C
Temperature Fluctuation	+/- 0.5°C	+/- 0.5°C	+/- 0.5°C	+/- 0.5°C	+/- 0.5°C
Power	160W	170W	170W	330W	330W
Access Port	Yes	Yes	Yes	Yes	Yes
Refrigerant Type	R134A	R134A	R134A	R134A	R134A
Additional features for Cloud models	MATOS® Cloud 68 R	MATOS® Cloud 150 R	MATOS® Cloud 200 R	MATOS® Cloud 250 R	MATOS® Cloud 300 R
Web monitoring	Yes	Yes	Yes	Yes	Yes
DAQ Backup Battery (x2)	12V sealed lead acid (x2 6V 3.5Ah)	12V sealed lead acid (x2 6V 3.5Ah)	12V sealed lead acid (x2 6V 3.5Ah)	12V sealed lead acid (x2 6V 3.5Ah)	12V sealed lead acid (x2 6V 3.5Ah)
LAN connection	RJ45 ethernet	RJ45 ethernet	RJ45 ethernet	RJ45 ethernet	RJ45 ethernet

MATOS® PLUS Refrigerators are also available in Tropical variants. The Standard versions are tested to run in ambient temperatures of 10°C to 28°C. The Tropical versions are tested to run in ambient temperatures of 10°C to 38°C.



MATOS® Eco 400 R MATOS® Cloud 400 R	MATOS® Eco 493 R MATOS® Cloud 493 R	MATOS® Eco 625 R MATOS® Cloud 625 R	MATOS® Eco 1365 R MATOS® Cloud 1365 R	MATOS® Eco 1460 R MATOS® Cloud 1460 R
Freestanding	Freestanding	Freestanding	Freestanding	Freestanding
400L	493L	625L	1365L	1460L
620w x 650d x 1860h	660w x 810d x 1990h	750w x 860d x 1990h	1480w x 860d x 1990h	1450w x 950d x 1970h
520w x 420d x 1660h	510w x 640d x 1510h	600w x 690d x 1510h	1310w x 690d x 1510h	1340w x 750d x 1460h
10kg	20kg	30kg	30kg	30kg
70kg	100kg	100kg	100kg	100kg
Solid/Glass option	Solid/Glass option	Solid/Glass option	Solid/Glass option	Solid/Glass option
90kg	105kg	115kg	185kg	200kg
6/10	6/11	6/11	2x6/11	2x6/11
Optional	Optional	Optional	Optional	Optional
Hinged	Hinged	Hinged	Hinged	Hinged
Yes	Yes	Yes	Yes	Yes
Yes	Yes	Yes	Yes	Yes
Yes	Yes	Yes	Yes	Yes
Yes	Yes	Yes	Yes	Yes
Fan Forced Air	Fan Forced Air	Fan Forced Air	Fan Forced Air	Fan Forced Air
Microprocessor with LCD graphic display	Microprocessor with LCD graphic display	Microprocessor with LCD graphic display	Microprocessor with LCD graphic display	Microprocessor with LCD graphic display
Aluminium (s/steel optional)	Aluminium (s/steel optional)	Aluminium (s/steel optional)	Aluminium (s/steel optional)	Aluminium (s/steel optional)
Powder coated steel (s/steel optional)	Powder coated steel (s/steel optional)	Powder coated steel (s/steel optional)	Powder coated steel (s/steel optional)	Powder coated steel (s/steel optional)
White/Teal	White	White	White	White
0°C to +15°C	0°C to +15°C	0°C to +15°C	0°C to +15°C	0°C to +15°C
0.1°C	0.1°C	0.1°C	0.1°C	0.1°C
+/- 0.5°C	+/- 0.5°C	+/- 0.5°C	+/- 0.5°C	+/- 0.5°C
330W	400W	400W	550W	550W
Yes	Yes	Yes	Yes	Yes
R134A	R404A	R404A	R404A	R404A
MATOS® Cloud 400 R	MATOS® Cloud 493 R	MATOS® Cloud 625 R	MATOS® Cloud 1365 R	MATOS® Cloud 1460 R
Yes	Yes	Yes	Yes	Yes
12V sealed lead acid (x2 6V 3.5Ah)	12V sealed lead acid (x2 6V 3.5Ah)	12V sealed lead acid (x2 6V 3.5Ah)	12V sealed lead acid (x2 6V 3.5Ah)	12V sealed lead acid (x2 6V 3.5Ah)
RJ45 ethernet	RJ45 ethernet	RJ45 ethernet	RJ45 ethernet	RJ45 ethernet



# **PLUS Freezers**

The MATOS® PLUS Freezer series can provide long-term storage of samples and biological material for research; and storage of easily decomposing material.



## Specifications

Standard features for all models	MATOS® Eco 85 F MATOS® Cloud 85 F	MATOS® Eco 125 F MATOS® Cloud 125 F	MATOS® Eco 200 F MATOS® Cloud 200 F	MATOS® Eco 300 F MATOS® Cloud 300 F
Description	Under-Bench	Freestanding	Freestanding	Freestanding
Capacity	85L	125L	200L	300L
Dimensions External	610w x 650d x 880h	660w x 800d x 1190h	760 x 800d x 1380h	760w x 800d x 1730h
Dimensions Internal	420w x 400d x 590h	420w x 520d x 600h	520w x 520d x 770h	520w x 520d x 1120h
Max shelf workload	10kg	10kg	10kg	10kg
Max unit workload	30kg	50kg	65kg	80kg
Weight	60kg	90kg	120kg	185kg
Shelves fit/max	2/4	2/3	2/4	3/6
Door	Solid	Solid	Solid	Solid
Door Style	Hinged	Hinged	Hinged	Hinged
Door Open Alarm	Yes	Yes	Yes	Yes
Lock	Yes	Yes	Yes	Yes
Air Convection	Natural	Natural	Natural	Natural
Controller	Microprocessor with LCD graphic display	Microprocessor with LCD graphic display	Microprocessor with LCD graphic display	Microprocessor with LCD graphic display
Interior	Stainless Steel	Stainless Steel	Stainless Steel	Stainless Steel
Housing	Powder coated steel (s/steel optional)	Powder coated steel (s/steel optional)	Powder coated steel (s/steel optional)	Powder coated steel (s/steel optional)
Colour	White/Grey	Grey	Grey	Grey
Temperature Range	-25°C to 0°C	-35°C to 0°C	-40°C to 0°C	-40°C to 0°C
Temperature Accuracy	1°C	1°C	1°C	1°C
Temperature Resolution	0.1°C	0.1°C	0.1°C	0.1°C
Power (W)	200W	450W	470W	470W
Access Port	Yes	Yes	Yes	Yes
Refrigerant Type	R404A	R404A	R404A	R404A
Additional features for Cloud models	MATOS® Cloud 85 F	MATOS® Cloud 125 F	MATOS® Cloud 200 F	MATOS® Cloud 300 F
Web monitoring	Yes	Yes	Yes	Yes
DAQ Backup Battery (x2)	12V sealed lead acid (x2 6V 3.5ah)	12V sealed lead acid (x2 6V 3.5ah)	12V sealed lead acid (x2 6V 3.5ah)	12V sealed lead acid (x2 6V 3.5ah)
LAN connection	RJ45 ethernet	RJ45 ethernet	RJ45 ethernet	RJ45 ethernet

The MATOS® PLUS Freezer range now includes fan forced and ultra-cold models



## Specifications

Standard features for all models	MATOS® Eco 200 FF MATOS® Cloud 200 FF	MATOS® Eco 300 FF MATOS® Cloud 300 FF	MATOS® Eco 200 UF MATOS® Cloud 200 UF	MATOS® Eco 300 UF MATOS® Cloud 300 UF
Description	Freestanding, Fan Forced	Freestanding, Fan Forced	Freestanding, Ultra Cold	Freestanding, Ultra Cold
Capacity	200L	300L	200L	300L
Dimensions External	760 x 800d x 1380h	760w x 800d x 1730h	850 x 950d x 1620h	850w x 950d x 1910h
Dimensions Internal	520w x 520d x 770h	520w x 520d x 1120h	520w x 550d x 830h	520w x 550d x 1140h
Max shelf workload	-	-	10kg	10kg
Max unit workload	160kg	160kg	65kg	80kg
Weight	120kg	185kg	180kg	200kg
Shelves fit/max	2/4	3/6	3 Chambers	4 Chambers
Door	Solid	Solid	Solid	Solid
Door Style	Hinged	Hinged	Hinged	Hinged
Door Open Alarm	Yes	Yes	Yes	Yes
Lock	Yes	Yes	Yes	Yes
Air Convection	Fan Forced	Fan Forced	Natural	Natural
Controller	Microprocessor with LCD graphic display	Microprocessor with LCD graphic display	Microprocessor with LCD graphic display	Microprocessor with LCD graphic display
Interior	Stainless Steel	Stainless Steel	Stainless Steel	Stainless Steel
Housing	Powder coated steel (s/steel optional)	Powder coated steel (s/steel optional)	Powder coated steel (s/steel optional)	Powder coated steel (s/steel optional)
Colour	Grey	Grey	Grey	Grey
Temperature Range	-40°C to 0°C	-40°C to 0°C	-85°C to -40°C	-85°C to -40°C
Temperature Accuracy	1°C	1°C	1°C	1°C
Temperature Resolution	0.1°C	0.1°C	0.1°C	0.1°C
Power (W)	500W	500W	670W	670W
Access Port	Yes	Yes	Yes	Yes
Refrigerant Type	R404A	R404A	R404A	R404A
Additional features for Cloud models	MATOS® Cloud 200 FF	MATOS® Cloud 300 FF	MATOS® Cloud 200 UF	MATOS® Cloud 300 UF
Web monitoring	Yes	Yes	Yes	Yes
DAQ Backup Battery (x2)	12v sealed lead acid (12v 3.5ah)	12v sealed lead acid (12v 3.5ah)	12v sealed lead acid (12v 3.5ah)	12v sealed lead acid (12v 3.5ah)
LAN connection	RJ45 ethernet	RJ45 ethernet	RJ45 ethernet	RJ45 ethernet

Freezers with forced air convection are “no frost” freezers. The basic principle of such system is to manage humidity inside the unit and prevent frost formation on the walls. Advantages: Uniform distribution of cool air through the chamber; Faster achieving of set temperature even with a large filling of the chamber.

# **Thermostatic Chambers**

MATOS® Thermostatic Chambers are equipped with both heating and cooling systems to hold a stable temperature range regardless of ambient conditions.



## Specifications

Standard features for all models	MATOS® Eco 68 R MATOS® Cloud 68 S	MATOS® Eco 150 S MATOS® Cloud 150 S	MATOS® Eco 200 S MATOS® Cloud 200 S	MATOS® Eco 250 S MATOS® Cloud 250 S	MATOS® Eco 300 S MATOS® Cloud 300 S
Description	On/Under-Bench	On/Under-Bench	Freestanding	Freestanding	Freestanding
Gross Capacity	68L	150L	200L	250L	300L
Dimensions External	570w x 680d x 600h	620w x 650d x 860h	620w x 650d x 1060h	620w x 650d x 1260h	620w x 650d x 1460h
Dimensions Internal	470w x 300d x 430h	520w x 420d x 660h	520w x 420d x 860h	520w x 420d x 1060h	520w x 420d x 1260h
Max shelf workload	10kg	10kg	10kg	10kg	10kg
Max unit workload	20kg	30kg	40kg	50kg	60kg
Door	Solid/Glass option	Solid/Glass option	Solid/Glass option	Solid/Glass option	Solid/Glass option
Weight	32kg	54kg	59kg	69kg	75kg
Shelves fit/max	2/2	3/4	3/4	4/6	5/7
Gas defrost	Optional	Optional	Optional	Optional	Optional
Door Style	Hinged	Hinged	Hinged	Hinged	Hinged
Door Open Sensor	Yes	Yes	Yes	Yes	Yes
Door Open Alarm	Yes	Yes	Yes	Yes	Yes
Lock	Yes	Yes	Yes	Yes	Yes
Castors	Optional	Optional	Optional	Yes	Yes
Air convection	Fan Forced Air	Fan Forced Air	Fan Forced Air	Fan Forced Air	Fan Forced Air
Controller	Microprocessor with LCD graphic display	Microprocessor with LCD graphic display	Microprocessor with LCD graphic display	Microprocessor with LCD graphic display	Microprocessor with LCD graphic display
Interior	Aluminium (s/steel optional)	Aluminium (s/steel optional)	Aluminium (s/steel optional)	Aluminium (s/steel optional)	Aluminium (s/steel optional)
Housing	Powder coated steel (s/steel optional)	Powder coated steel (s/steel optional)	Powder coated steel (s/steel optional)	Powder coated steel (s/steel optional)	Powder coated steel (s/steel optional)
Colour	White/Teal	White/Teal	White/Teal	White/Teal	White/Teal
Temperature Range	+3°C to +40°C	+3°C to +40°C	+3°C to +40°C	+3°C to +40°C	+3°C to +40°C
Temperature Resolution	0.1°C	0.1°C	0.1°C	0.1°C	0.1°C
Temperature Fluctuation	+/- 0.2°C	+/- 0.2°C	+/- 0.3°C	+/- 0.3°C	+/- 0.3°C
Power	160W	170W	170W	330W	330W
Access Port	Yes	Yes	Yes	Yes	Yes
Refrigerant Type	R134A	R134A	R134A	R134A	R134A
Additional features for Cloud models	MATOS® Cloud 68 S	MATOS® Cloud 150 S	MATOS® Cloud 200 S	MATOS® Cloud 250 S	MATOS® Cloud 300 S
Web monitoring	Yes	Yes	Yes	Yes	Yes
DAQ Backup Battery (x2)	12V sealed lead acid (x2 6V 3.5Ah)	12V sealed lead acid (x2 6V 3.5Ah)	12V sealed lead acid (x2 6V 3.5Ah)	12V sealed lead acid (x2 6V 3.5Ah)	12V sealed lead acid (x2 6V 3.5Ah)
LAN connection	RJ45 ethernet	RJ45 ethernet	RJ45 ethernet	RJ45 ethernet	RJ45 ethernet





MATOS <sup>®</sup> Eco 400 S MATOS <sup>®</sup> Cloud 400 S	MATOS <sup>®</sup> Eco 493 S MATOS <sup>®</sup> Cloud 493 S	MATOS <sup>®</sup> Eco 625 S MATOS <sup>®</sup> Cloud 625 S	MATOS <sup>®</sup> Eco 1365 S MATOS <sup>®</sup> Cloud 1365 S	MATOS <sup>®</sup> Eco 1460 S MATOS <sup>®</sup> Cloud 1460 S
Freestanding	Freestanding	Freestanding	Freestanding	Freestanding
400L	493L	625L	1365L	1460L
620w x 650d x 1860h	660w x 810d x 1990h	750w x 860d x 1990h	1480w x 860d x 1990h	1450w x 950d x 1970h
520w x 420d x 1660h	510w x 640d x 1510h	600w x 690d x 1510h	1310w x 690d x 1510h	1340w x 750d x 1460h
10kg	20kg	30kg	30kg	30kg
70kg	100kg	100kg	100kg	100kg
Solid/Glass option	Solid/Glass option	Solid/Glass option	Solid/Glass option	Solid/Glass option
90kg	105kg	115kg	185kg	200kg
6/10	6/11	6/11	2x6/11	2x6/11
Optional	Optional	Optional	Optional	Optional
Hinged	Hinged	Hinged	Hinged	Hinged
Yes	Yes	Yes	Yes	Yes
Yes	Yes	Yes	Yes	Yes
Yes	Yes	Yes	Yes	Yes
Yes	Yes	Yes	Yes	Yes
Fan Forced Air	Fan Forced Air	Fan Forced Air	Fan Forced Air	Fan Forced Air
Microprocessor with LCD graphic display	Microprocessor with LCD graphic display	Microprocessor with LCD graphic display	Microprocessor with LCD graphic display	Microprocessor with LCD graphic display
Aluminium (s/steel optional)	Aluminium (s/steel optional)	Aluminium (s/steel optional)	Aluminium (s/steel optional)	Aluminium (s/steel optional)
Powder coated steel (s/steel optional)	Powder coated steel (s/steel optional)	Powder coated steel (s/steel optional)	Powder coated steel (s/steel optional)	Powder coated steel (s/steel optional)
White/Teal	White	White	White	White
+3°C to +40°C	+3°C to +40°C	+3°C to +40°C	+3°C to +40°C	+3°C to +40°C
0.1°C	0.1°C	0.1°C	0.1°C	0.1°C
+/- 0.3°C	+/- 0.3°C	+/- 0.3°C	+/- 0.3°C	+/- 0.3°C
330W	400W	400W	550W	550W
Yes	Yes	Yes	Yes	Yes
R134A	R404A	R404A	R404A	R404A
MATOS <sup>®</sup> Cloud 400 S	MATOS <sup>®</sup> Cloud 493 S	MATOS <sup>®</sup> Cloud 625 S	MATOS <sup>®</sup> Cloud 1365 S	MATOS <sup>®</sup> Cloud 1460 S
Yes	Yes	Yes	Yes	Yes
12V sealed lead acid (x2 6V 3.5Ah)	12V sealed lead acid (x2 6V 3.5Ah)	12V sealed lead acid (x2 6V 3.5Ah)	12V sealed lead acid (x2 6V 3.5Ah)	12V sealed lead acid (x2 6V 3.5Ah)
RJ45 ethernet	RJ45 ethernet	RJ45 ethernet	RJ45 ethernet	RJ45 ethernet

# **matos®** ARIA RANGE



The Matos® ARIA Cloud and Eco series are a new range of cost-effective European-built Medical and Vaccination Refrigerators featuring the latest technology in controllers and compressors for accurate temperature stability.

## Key Features include:

- Fast cool down
- Featuring the Carel soft touch controller - with min/max readings at the touch of a button
- Automatic defrost
- Unique fan control for better temperature maintenance
- Auxiliary Alarm Contacts as standard
- Door lock as standard
- Internal LED light
- Glass door option available on all models
- Temperature and door open alarms
- Available in Cloud or Eco versions
- plus...

## Extended Warranty

Standard 12 month warranty however an extended warranty option is available subject to Terms and Conditions

Available as an Eco or Cloud version

\*Cloud unit has the MATOS Monitoring solution in-built into the Refrigerator.

## Specifications



Standard features for all models	MATOS <sup>®</sup> ARIA Eco 150 R MATOS <sup>®</sup> ARIA Cloud 150 R	MATOS <sup>®</sup> ARIA Eco 220 R MATOS <sup>®</sup> ARIA Cloud 220 R	MATOS <sup>®</sup> ARIA Eco 300 R MATOS <sup>®</sup> ARIA Cloud 300 R	MATOS <sup>®</sup> ARIA Eco 374 R MATOS <sup>®</sup> ARIA Cloud 374 R
Description	On/Under-Bench	Freestanding	Freestanding	Freestanding
Gross Capacity	150L	215L	290L	372L
Dimensions External	595w x 635d x 845h	597w x 645d x 1370h	597w x 645d x 1700h	597w x 645d x 1896h
Dimensions Internal	500w x 450d x 705h	505w x 462d x 1025h	505w x 462d x 1355h	505w x 462d x 1555h
Door	Solid/Glass option	Solid/Glass option	Solid/Glass option	Solid/Glass option
Weight	Solid 37kg / Glass 42kg	Solid 58kg / Glass 65kg	Solid 65kg / Glass 74kg	Solid 70kg / Glass 80kg
Shelves fit/max	3/4	5/6	6/7	6/7
Door Style	Hinged	Hinged	Hinged	Hinged
Door Open Sensor	Yes	Yes	Yes	Yes
Door Open Alarm	Yes	Yes	Yes	Yes
Lock	Yes	Yes	Yes	Yes
Castors	2 wheels rear, 2 adjustable feet	2 wheels rear, 2 adjustable feet	2 wheels rear, 2 adjustable feet	2 wheels rear, 2 adjustable feet
Air convection	Fan Forced Air	Fan Forced Air	Fan Forced Air	Fan Forced Air
Controller	Microprocessor with external LCD graphic display	Microprocessor with external LCD graphic display	Microprocessor with external LCD graphic display	Microprocessor with external LCD graphic display
Interior	HIPS (High Impact Polystyrene)	HIPS (High Impact Polystyrene)	HIPS (High Impact Polystyrene)	HIPS (High Impact Polystyrene)
Housing	Powder coated steel	Powder coated steel	Powder coated steel	Powder coated steel
Colour	White/Teal	White/Teal	White/Teal	White/Teal
Temperature Range	2°C to +8°C	1°C to +10°C	1°C to +10°C	1°C to +10°C
Temperature Resolution	0.1°C	0.1°C	0.1°C	0.1°C
Temperature Fluctuation	+/- 0.5°C	+/- 0.5°C	+/- 0.5°C	+/- 0.5°C
Power	Solid 1.1kW Glass 1.24kW 24 hours	Solid 270W Glass 350W 24 hours	Solid 290W Glass 360W 24 hours	Solid 430W Glass 480W 24 hours
Auxiliary External Contact	Yes	Yes	Yes	Yes
Refrigerant Type	R600A	R134A	R134A	R134A
Additional features for Cloud models		MATOS <sup>®</sup> ARIA Cloud 220 R	MATOS <sup>®</sup> ARIA Cloud 300 R	MATOS <sup>®</sup> ARIA Cloud 374 R
Web monitoring		Yes	Yes	Yes
DAQ Backup Battery (x2)		12V sealed lead acid (x2 6V 3.5Ah)	12V sealed lead acid (x2 6V 3.5Ah)	12V sealed lead acid (x2 6V 3.5Ah)
LAN connection		RJ45 ethernet	RJ45 ethernet	RJ45 ethernet



## SECTION 2

# LEC MEDICAL





We have developed our range of Pharmacy and Laboratory refrigerators and freezers with reliability and ease of use in mind.

Our Pharmacy range conforms to the guidance set out by the Pharmacy Guild of Australia and maintains an internal temperature of between +2°C and +8°C. Our Laboratory fridges operate at a temperature of +2°C to +10°C and our freezers operate at -18°C and below.

We have also added a number of improvements to most popular models to ensure we are offering you the best possible secure and reliable refrigerated storage.

## New Generation Refrigeration

Fridge & Freezer product line features:

- Energy efficient refrigerant
- Fan management system
- Advanced controller
- Anti-microbial handle
- Ready to use
- Forced air cooling
- Storage flexibility
- Fitted rollers
- Lock fitted as standard

We offer a wide range of freezers to suit your needs, from small counter-top units ideal for when space is limited, to freestanding units for when extra storage capacity is required.



## Specifications

Model	ISU 27	ISU 37	LSF 232
Description	Under/On-Bench	Under/On-Bench	Freestanding
Capacity	50L	102L	232L
Dimensions External	500w x 510d x 562h	495w x 620d x 830h	595w x 634d x 1570h
Dimensions Internal	345w x 330d x 365h	414w x 415d x 683h	432w x 430d x 1300h
Weight	17kg	33kg	60kg
Door	Solid	Solid	Solid
Door Style	Hinged, reversible	Hinged, reversible	Hinged, reversible
Door Open Alarm	No	No	Yes
Shelves Supplied/Positions	1 fixed	2 fixed, 1 basket	4 drawers, 2 flaps
Shelf Material	Wire	Wire	Wire
Wire Basket	No	No	No
Lock	Yes	Yes	Yes
Feet	No	Yes, 2 front adjustable	Yes, 2 front adjustable
Rollers	No	No	Yes, 2 rear
Controller Type	Digital, External	Digital, External	Digital, External
Interior	High Impact Polystyrene Interior	High Impact Polystyrene Interior	High Impact Polystyrene Interior
Housing	Painted Steel (s/steel optional)	Painted Steel (s/steel optional)	Painted Steel (s/steel optional)
Colour	White/Teal	White/Teal	White/Teal
Temperature Range	-18°C to -20°C	-18°C to -20°C	-18°C to -25°C
Defrost	Manual	Manual	Manual
Interior Light	No	No	No
Insulation Type	Cyclopentane	Cyclopentane	Cyclopentane
Insulation Thickness	30mm	35mm	60mm
Anti-Microbial Handle	Yes	Yes	Yes
Voltage Supply	220-240V / 50Hz	220-240V / 50Hz	220-240V / 50Hz
Refrigerant Type	R134A	R134A	R600A
CFC Free	Yes	Yes	Yes
HFC Free	No	No	Yes
HCFC	Yes	Yes	Yes
Auxiliary External Contact	Yes	Yes	Yes



Our Pharmacy range conforms to the guidance set out by the Pharmacy Guild of Australia and maintains an internal air temperature between +2°C and +8°C.



## Specifications

Model	PE/PG 207 / PESR/PEGR82	PSR/PGR 151 / PESR/PEGR158	PSR/PGR 273 / PESR/PEGR273
Description	Under/On-Bench	Underbench	Freestanding
Capacity	82L	151L	273L
Dimensions External	502w x 540d x 660h	595w x 610d x 845h	595w x 640d x 1565h
Dimensions Internal	410w x 315d x 540h	500w x 440d x 705h	480w x 445d x 1382h
Weight	27.5kg - 30kg	37kg - 42kg	60kg - 68.5kg
Door	Solid/Glass option	Solid/Glass option	Solid/Glass option
Door Style	Hinged, solid reversible	Hinged, solid reversible	Hinged, solid reversible
Door Open Alarm	Yes	Yes	Yes
Shelves Supplied/Positions	2/2	3/6	5/12
Shelf Material	Wire	Wire	Wire
Wire Basket	Yes	Yes	Yes
Lock	Yes	Yes, 2 keys	Yes, 2 keys
Feet	No	Yes, 2 front adjustable	Yes, 2 front adjustable
Rollers	No	Yes, 2 rear	Yes, 2 rear
Controller Type	Digital, External	Digital, External	Digital, External
Interior	High Impact Polystyrene Interior	High Impact Polystyrene Interior	High Impact Polystyrene Interior
Housing	Painted Steel (s/steel optional)	Painted Steel (s/steel optional)	Painted Steel (s/steel optional)
Colour	White/Teal	White/Teal	White/Teal
Temperature Range	+2°C to +8°C	+2°C to +8°C	+2°C to +8°C
Defrost	Automatic	Automatic	Automatic
Interior Light	Yes	Yes	Yes
Insulation Type	Cyclopentane	Cyclopentane	Cyclopentane
Insulation Thickness	30mm	45mm	60mm
Anti-Microbial Handle	Yes	Yes	Yes
Voltage Supply	220-240V / 50Hz	220-240V / 50Hz	220-240V / 50Hz
Refrigerant Type	R134A	R600A	R600A
CFC Free	Yes	Yes	Yes
HFC Free	No	Yes	Yes
HCFC	Yes	Yes	Yes
Auxiliary External Contact	Yes	Yes	Yes



PSR/PGR 353 / PESR/PEGR353	PE/PG 1607
Freestanding	Freestanding
353L	444L
595w x 640d x 1860h	685w x 910d x 1688h
480w x 445d x 1682h	590w x 670d x 1170h
68kg - 79kg	96kg - 106kg
Solid/Glass option	Solid/Glass option
Hinged, solid reversible	Hinged, right handed only
Yes	Yes
6/14	5/30
Wire	Wire
Yes	Yes
Yes, 2 keys	Yes
Yes, 2 front adjustable	Castors
Yes, 2 rear	Castors
Digital, External	Digital, External
High Impact Polystyrene Interior	High Impact Polystyrene Interior
Painted Steel (s/steel optional)	Painted Steel (s/steel optional)
White/Teal	White/Teal
+2°C to +8°C	+2°C to +8°C
Automatic	Automatic
Yes	Yes
Cyclopentane	Cyclopentane
60mm	40mm
Yes	Yes
220-240V / 50Hz	220-240V / 50Hz
R600A	R134A
Yes	Yes
Yes	No
Yes	Yes
Yes	Yes

PSC/PGC 300
Freestanding Fridge/Freezer
151L / 151L
595w x 610d x 1668h
500w x 440d x 1410h
82kg - 87kg
Solid/Glass option
Hinged, solid reversible
Yes
Fridge: 3/6 Freezer: fixed
Wire
Yes
Yes
Yes, 2 front adjustable
Yes, 2 rear
Digital, External
High Impact Polystyrene Interior
Painted Steel (s/steel optional)
White/Teal
+2°C to +8°C / -18°C to -25°C
Fridge: Automatic / Freezer: Manual
Yes / No
Cyclopentane
45mm
Yes
220-240V / 50Hz
R600A
Yes
Yes
Yes
Yes

We provide safe, reliable and energy efficient temperature controlled storage to laboratories. All our Laboratory fridges and freezers are SPARK FREE, allowing you to store combustible products safely.



## Specifications

Model	LR 207	LR 307	LSR 151
Description	Under/On-Bench	Under/On-Bench	Under/On-Bench
Capacity	82L	107L	151L
Dimensions External	502w x 540d x 660h	495w x 620d x 830h	595w x 595d x 845h
Dimensions Internal	415w x 340d x 540h	403w x 400d x 540h	500w x 450d x 705h
Weight	27.5kg	31.5kg	36kg
Door	Solid	Solid	Solid
Door Style	Hinged, reversible	Hinged, reversible	Hinged, reversible
Door Open Alarm	No	No	Yes
Shelves Supplied/Positions	2/2	2/4	3/6
Shelf Material	Wire	Wire	Wire
Wire Basket	Yes	Yes	Yes
Lock	Yes	Yes	Yes
Feet	No	Yes, 2 front	Yes, 2 front adjustable
Rollers	No	No	Yes, 2 rear
Controller Type	Digital, External	Digital, External	Digital, External
Interior	High Impact Polystyrene Interior	High Impact Polystyrene Interior	High Impact Polystyrene Interior
Housing	Painted Steel (s/steel optional)	Painted Steel (s/steel optional)	Painted Steel (s/steel optional)
Colour	White/Teal	White/Teal	White/Teal
Temperature Range	+2°C to +10°C	+2°C to +10°C	+2°C to +10°C
Defrost	Automatic	Automatic	Automatic
Interior Light	No	No	No
Insulation Type	Cyclopentane	Cyclopentane	Cyclopentane
Insulation Thickness	30mm	35mm	45mm
Anti-Microbial Handle	Yes	Yes	Yes
Voltage Supply	220-240V / 50Hz	220-240V / 50Hz	220-240V / 50Hz
Refrigerant Type	R134A	R134A	R600A
CFC Free	Yes	Yes	Yes
HFC Free	No	No	Yes
HCFC	Yes	Yes	Yes
Auxiliary External Contact	Yes	Yes	Yes



LSR 288	LR 1607	ISR 27	LSC 300
Freestanding	Freestanding	Under/On-Bench Fridge/Freezer	Freestanding Fridge/Freezer
288L	475L	77L / 6.5L	151L / 151L
595w x 634d x 1570h	695w x 910d x 1688h	502w x 540d x 660h	595w x 600d x 1668h
480w x 445d x 1382h	550w x 670d x 1170h	415w x 370d x 540h	500w x 440d x 1410h
58kg	95kg	25kg	82kg - 87kg
Solid	Solid	Solid	Solid
Hinged, reversible	Hinged, reversible	Hinged, reversible	Hinged, reversible
Yes	No	No	Yes
5/12	5/30	2/2	Fridge: 3/6 Freezer: fixed
Wire	Wire	Wire	Wire
Yes	Yes	Yes	Yes
Yes	Yes	Yes	Yes
Yes, 2 front adjustable	Castors	Yes, 2 front adjustable	Yes, 2 front adjustable
Yes, 2 rear	Castors	Yes, 2 rear	Yes, 2 rear
Digital, External	Digital, External	Digital, External	Digital, External
Stainless Steel	High Impact Polystyrene Interior	High Impact Polystyrene Interior	High Impact Polystyrene Interior
Painted Steel (s/steel optional)	Painted Steel (s/steel optional)	Painted Steel (s/steel optional)	Painted Steel (s/steel optional)
White/Teal	White/Teal	White/Teal	White/Teal
+2°C to +10°C	+2°C to +10°C	+2°C to +10°C / -15°C to -21°C	+2°C to +8°C / -15°C to -21°C
Automatic	Automatic	Automatic / Manual	Fridge:Automatic/Freezer:Manual
No	No	No	Yes / No
Cyclopentane	Cyclopentane	Cyclopentane	Cyclopentane
60mm	65mm	30mm	45mm
No	No	Yes	Yes
220-240V / 50Hz	220-240V / 50Hz	220-240V / 50Hz	220-240V / 50Hz
R600A	R134A	R134A	R600A
Yes	Yes	Yes	Yes
Yes	No	No	Yes
Yes	Yes	Yes	Yes



## SECTION 3

# ANGELANTONI



Our Angelantoni series offers a wide range of standard and special equipment for Research Centres, Hospitals, Laboratories, Academia and the Pharmaceutical industry.



## The Angelantoni Range

### Laboratory Refrigerators for Storing Drugs and/or Biological Material.

Angelantoni offers a wide range of refrigerated cabinets at single or dual temperature (combination of a refrigerator and a freezer in a single unit) dedicated to the preservation of biological materials and pharmaceuticals. In particular, the broad range of models of different capacities fully copes with diverse needs of healthcare and biotechnology.

The EKOFRIGOLAB complies with the most stringent conditions required by the international standards.

The EKOFRIGOLAB complies with a medium labs standards.

The FCL PRO combinations offer upright, dual temperature units.

### Blood Refrigerators

Angelantoni has a wide range of certified blood bank refrigerators (BBR) to meet the demands of small, medium and large transfusion centers for hospitals, analytical laboratories and operating rooms. The range can store 30 to 1,400 blood bags and ensure, through a proprietary electronic system, the internal temperature remains at +4°C.

### Blood Freezers

Complete range of certified freezers at -40°C. These devices are specifically adapted for use in hospitals and laboratories for freezing and storage over long periods of blood components and derivatives.

Complete range of Plasma Freezer for preserving Plasma on short, medium and long terms.

Storing capacity: from 200 to 600 Plasma bags.

## Laboratory Freezers for Storing Drugs/ Reagents and/or Biological Material.

Angelantoni offers a broad range of freezers from  $-20^{\circ}\text{C}$  to  $-85^{\circ}\text{C}$  to meet the expectations of healthcare and biotechnology. Particularly suitable for use in hospitals and laboratories for freezing and long storage of micro-organisms, viruses, or any kind of biological sample.

The KRYOLAB line complies with medium labs standards and offers flexibility in the storage system.

The  $-86^{\circ}\text{C}$  PLATILAB & IRILAB series are the most advanced solutions to comply with the needs of safe cell preservation, biological samples, and blood derivatives, etc.

This ultra cold freezer line offers a wide range of chest and up-right models, with efficient use of the inner space, advanced control devices (E2003 and new Cold Brain) as the PC-linked CRYOLOG software and BIOGUARD<sup>®</sup>, a proprietary transponder-operated access control.



## Plasma Blast Freezers

Specifically built to freeze the blood plasma at  $-30^{\circ}\text{C}$  in less than 60 minutes in compliance with the most restrictive standards to preserve the plasma active ingredients. Can hold 24 to 40 Plasma bags (250/450/600 ml).



## Ekobasic & Ekofrigolab Refrigerators



### Specifications

Model No	EKOBASIC 700/1 TN	EKOBASIC 1500/2 TN	EKOFRIGOLAB 700/1 TN	EKOFRIGOLAB 1500/2 TN
Description	Upright	Upright	Upright	Upright
Capacity	700L	1500L	700L	1500L
Dimensions External	740w x 815d x 1998h	1480w x 815d x 1998h	740w x 815d x 1998h	1480w x 815d x 1998h
Dimensions Internal	590w x 675d x 1500h	1330w x 675d x 1500h	590w x 675d x 1500h	1330w x 675d x 1500h
Weight	120kg	200kg	140kg	250kg
Shelves - number	4	6	4	6
Shelves - stainless, adjustable	Yes	Yes	Yes	Yes
Port Hole	Yes	Yes	Yes	Yes
Internal Ventilation	Yes	Yes	Yes	Yes
Tropical Capable	Yes	Yes	Yes	Yes
Door	Solid/Glass option	Solid/Glass option	Solid/Glass option	Solid/Glass option
Door Style	Hinged	Hinged	Hinged	Hinged
Door Open Sensor	Yes	Yes	Yes	Yes
Door Open Alarm	Yes	Yes	Yes	Yes
Lock	Yes	Yes	Yes	Yes
Castors	No	No	Yes	Yes
Controller	LAE	LAE	Microprocessor (E2003)	Microprocessor (E2003)
Interior	Stainless Steel	Stainless Steel	Stainless Steel	Stainless Steel
Housing	Zinc Plated Steel (s/steel optional)	Zinc Plated Steel (s/steel optional)	Zinc Plated Steel (s/steel optional)	Zinc Plated Steel (s/steel optional)
Temperature Range	0°C to +15°C	0°C to +15°C	0°C to +15°C	0°C to +15°C
Internal Lighting	Yes	Yes	Yes	Yes
Backup Alarm Battery	Yes	No	Yes	Yes
Power Supply	230V / 50Hz	230V / 50Hz	230V / 50Hz	230V / 50Hz
Refrigerant Type	R404A	R404A	R134A	R134A

E2003 - Microprocessors with two independent sections for settings and alarms (acoustic and visual).



# Ekobasic & Ekofrigolab Freezers



Model No	EKOBASIC 700/1 BT	EKOBASIC 1500/2 BT	EKOFRIGOLAB 700/1 BT	EKOFRIGOLAB 1500/2 BT
Description	Upright	Upright	Upright	Upright
Capacity	700L	1500L	700L	1500L
Dimensions External	740w x 815d x 1998h	1480w x 815d x 1998h	740w x 815d x 1998h	1480w x 815d x 1998h
Dimensions Internal	590w x 675d x 1500h	1330w x 675d x 1500h	590w x 675d x 1500h	1330w x 675d x 1500h
Weight	130kg	210kg	160kg	230kg
Shelves - number	4	6	4	6
Shelves - stainless, adjustable	Yes	Yes	Yes	Yes
Port Hole	Yes	Yes	Yes	Yes
Internal Ventilation	Yes	Yes	Yes	Yes
Tropical Capable	Yes	Yes	Yes	Yes
Door	Solid	Solid	Solid	Solid
Door Style	Hinged	Hinged	Hinged	Hinged
Door Open Sensor	Yes	Yes	Yes	Yes
Door Open Alarm	Yes	Yes	Yes	Yes
Lock	Yes	Yes	Yes	Yes
Castors	No	No	Yes	Yes
Controller	LAE	LAE	Microprocessor (E2003)	Microprocessor (E2003)
Interior	Stainless Steel	Stainless Steel	Stainless Steel	Stainless Steel
Housing	Zinc Plated Steel (s/steel optional)	Zinc Plated Steel (s/steel optional)	Zinc Plated Steel (s/steel optional)	Zinc Plated Steel (s/steel optional)
Temperature Range	-10°C to -20°C	-10°C to -20°C	-10°C to -23°C	-10°C to -23°C
Internal Lighting	Yes	Yes	Yes	Yes
Backup Alarm Battery	No	No	Yes	Yes
Power Supply	230V / 50Hz	230V / 50Hz	230V / 50Hz	230V / 50Hz
Refrigerant Type	R404A	R404A	R404A	R404A

E2003 - Microprocessors with two independent sections for settings and alarms (acoustic and visual).

## Underbench Units & Ekofrigolab Fridge/Freezers



### Specifications

Model No	UBR 160 Fridge	UBF 110 Freezer	EKOFRIGOLAB 700/2 TS	EKOFRIGOLAB 1500/2 TS
Description	Under Bench	Under Bench	Upright	Upright
Capacity	160L	110L	300L Fridge 300L Freezer	600L Fridge 600L Freezer
Dimensions External	600w x 590d x 840h	530w x 445d x 700h	740w x 815d x 1998h	1480w x 815d x 1998h
Weight	50kg	55kg	140kg	250kg
Shelves	4, glass	4, 1 in glass	2x2 Stainless Steel	2x4 Stainless Steel
Adjustable Shelves	Yes	Yes	Yes	Yes
Port Hole	Yes	Yes	Yes	Yes
Internal Ventilation	Yes	Yes	Yes	Yes
Tropical Capable	Yes	Yes	Yes	Yes
Door	Solid	Solid	Solid	Solid
Door Style	Hinged	Hinged	Hinged	Hinged
Door Open Sensor	Yes	Yes	Yes	Yes
Door Open Alarm	Yes	Yes	Yes	Yes
Lock	Yes	Yes	Yes	Yes
Castors	No	No	Yes	Yes
Controller	Internal thermostat	Internal thermostat	Microprocessor (E2003)	Microprocessor (E2003)
Interior	Stainless Steel	Stainless Steel	Stainless Steel	Stainless Steel
Housing	Zinc Plated Steel (s/steel optional)	Zinc Plated Steel (s/steel optional)	Galvanised Steel	Galvanised Steel
Temperature Range	+2°C to +12°C	-16°C to -30°C	0°C to 15°C / -10°C to -23°C	0°C to 15°C / -10°C to -23°C
Internal Lighting	Yes	No	Yes	Yes
Backup Alarm Battery	No	No	No	No
Power Supply	230V / 50Hz	230V / 50Hz	230V / 50Hz	230V / 50Hz
Refrigerant Type	R134A	R404A	R134A / R404A	R134A / R404A

E2003 - Microprocessors with two independent sections for settings and alarms (acoustic and visual). Includes temperature graphic recorder.

# Blood Bank Refrigerators



MINI 130 /2	MINI 250 /4 /5	BBR 700 /5 /6 /7 /8	BBR 850 /8 /9	BBR 1500 /12 /14
Upright Drawer	Upright Drawer	Upright Drawer	Upright Drawer	Upright Drawer
36 x450ml bag 80 x250ml bag	72-90 x450ml bag 160-200 x250ml bag	220-352 x450ml bag 380-608 x250ml bag	440-495 x450ml bag 720-810 x250ml bag	528-616 x450ml bag 912-1064 x250ml bag
600w x 640d x 1280h	600w x 640d x 1850h	740w x 865d x 1998h	810w x 1060d x 1998h	1480w x 865d x 1998h
105kg	135-140kg	250-265kg	300-308kg	470-480kg
2	4 / 5	5 / 6 / 7 / 8	8 / 9	12 / 14
Yes	Yes	Yes	Yes	Yes
Yes	Yes	Yes	Yes	Yes
Yes	Yes	Yes	Yes	Yes
Yes	Yes	Yes	Yes	Yes
Triplevacuum-sealedglass	Triplevacuum-sealedglass	Triplevacuum-sealedglass	Triplevacuum-sealedglass	Triplevacuum-sealedglass
Hinged	Hinged	Hinged	Hinged	Hinged
Yes	Yes	Yes	Yes	Yes
Yes	Yes	Yes	Yes	Yes
Yes	Yes	Yes	Yes	Yes
No	No	No	No	No
Microprocessor (E2003)	Microprocessor (E2003)	Microprocessor (E2003)	Microprocessor (E2003)	Microprocessor (E2003)
Stainless Steel	Stainless Steel	Stainless Steel	Stainless Steel	Stainless Steel
Zinc Plated Steel (s/steel optional)	Zinc Plated Steel (s/steel optional)	Zinc Plated Steel (s/steel optional)	Zinc Plated Steel (s/steel optional)	Zinc Plated Steel (s/steel optional)
+4°C	+4°C	+4°C	+4°C	+4°C
Yes	Yes	Yes	Yes	Yes
No	No	Yes	Yes	Yes
230V / 50Hz	230V / 50Hz	230V / 50Hz	230V / 50Hz	230V / 50Hz
R134A	R134A	R134A	R134A	R134A

E2003 - Microprocessors with two independent sections for settings and alarms (acoustic and visual). Includes temperature graphic recorder.



### Specifications

Model No	PLATINUM 110 SH	PLATINUM 370 SH	PLATINUM 550 SH	PLATINUM 340 SV-3-STD	PLATINUM 500 SV-3-STD
Description	Chest	Chest	Chest	Upright	Upright
Capacity	113L	370L	550L	322L	500L
Dimensions External	730w x 900d x 1100h	1780w x 855d x 1140h	2350w x 855d x 1140h	765w x 900d x 1985h	1015w x 900d x 1985h
Dimensions Internal	450w x 570d x 450h	1050w x 520d x 670h	1590w x 520d x 670h	450w x 530d x 1350h	700w x 530d x 1350h
Weight	150kg	234kg	275kg	214kg	262kg
Shelves	2, stainless steel	2, stainless steel	2, stainless steel	3, insulated	3, insulated
Adjustable Shelves	Yes	Yes	Yes	Yes	Yes
Port Hole	Yes	Yes	Yes	Yes	Yes
Internal Ventilation	Yes	Yes	Yes	Yes	Yes
Tropical Capable	Yes	Yes	Yes	Yes	Yes
Door	Solid	Solid	Solid	Solid	Solid
Door Style	Hinged	Hinged	Hinged	Hinged	Hinged
Door Open Sensor	Yes	Yes	Yes	Yes	Yes
Door Open Alarm	Yes	Yes	Yes	Yes	Yes
Lock	Yes	Yes	Yes	Yes	Yes
Castors	Yes	Yes	Yes	Yes	Yes
Controller	Microprocessor (E2003)	Microprocessor (E2003)	Microprocessor (E2003)	Microprocessor (E2003)	Microprocessor (E2003)
Interior	Stainless Steel	Stainless Steel	Stainless Steel	Stainless Steel	Stainless Steel
Housing	Zinc Plated Steel (s/steel optional)	Zinc Plated Steel (s/steel optional)	Zinc Plated Steel (s/steel optional)	Zinc Plated Steel (s/steel optional)	Zinc Plated Steel (s/steel optional)
Temperature Range	-20°C to -45°C	-20°C to -45°C	-20°C to -45°C	-20°C to -45°C	-20°C to -45°C
Internal Lighting	Yes	Yes	Yes	Yes	Yes
Backup Alarm Battery	Yes	Yes	Yes	Yes	Yes
Power Supply	230V / 50Hz	230V / 50Hz	230V / 50Hz	230V / 50Hz	230V / 50Hz
Refrigerant Type	R600A	R600A	R600A	R404A	R404A

E2003 - Microprocessors with two independent sections for settings and alarms (acoustic and visual). Includes temperature graphic recorder.



# Platinum Next Freezers



Model No	PLATINUM NEXT 370H	PLATINUM NEXT 550H	PLATINUM NEXT 340 V-4-STD	PLATINUM NEXT 500 V-4-STD
Description	Chest	Chest	Upright	Upright
Capacity	370L	550L	340L	500L
Dimensions External	1780w x 855d x 1140h	2350w x 855d x 1140h	765w x 900d x 1985h	1015w x 900d x 1985h
Dimensions Internal	1050w x 520d x 670h	1590w x 520d x 670h	450w x 530d x 1350h	700w x 530d x 1350h
Weight	234kg	275kg	235kg	301kg
Shelves	3, stainless steel	3, stainless steel	3, stainless steel	3, stainless steel
Adjustable Shelves	Yes	Yes	Yes	Yes
Port Hole	Yes	Yes	Yes	Yes
Internal Ventilation	Yes	Yes	Yes	Yes
Tropical Capable	Yes	Yes	Yes	Yes
Door	Solid, 4 insulated internal	Solid, 4 insulated internal	Solid, 4 insulated internal	Solid, 4 insulated internal
Door Style	Hinged	Hinged	Hinged	Hinged
Door Open Sensor	Yes	Yes	Yes	Yes
Door Open Alarm	Yes	Yes	Yes	Yes
Lock	Yes	Yes	Yes	Yes
Castors	Yes	Yes	Yes	Yes
Controller	Microprocessor (E2003)	Microprocessor (ColdBrain™)	Microprocessor (ColdBrain™)	Microprocessor (ColdBrain™)
Interior	Stainless Steel	Stainless Steel	Stainless Steel	Stainless Steel
Housing	Zinc Plated Steel (s/steel optional)	Zinc Plated Steel (s/steel optional)	Zinc Plated Steel (s/steel optional)	Zinc Plated Steel (s/steel optional)
Temperature Range	-40°C to -86°C	-40°C to -86°C	-40°C to -86°C	-40°C to -86°C
Internal Lighting	Yes	Yes	Yes	Yes
Backup Alarm Battery	Yes	Yes	Yes	Yes
Power Supply	230V / 50Hz	230V / 50Hz	230V / 50Hz	230V / 50Hz
Refrigerant Type	R404A	R404A	R404A	R404A

E2003 - Microprocessors with two independent sections for settings and alarms (acoustic and visual).  
ColdBrain™ Multifunction electronic controller (three microprocessors for superior reliability and redundant security).



## Specifications

Model No	PLATILAB 110 H	PLATILAB 370 H	PLATILAB 550 H	PLATILAB 340 V-4-STD	PLATILAB 500 V-4-STD
Description	Chest	Chest	Chest	Upright	Upright
Capacity	110L	370L	550L	340L	500L
Dimensions External	730w x 850d x 1080h	1780w x 855d x 1140h	2350w x 855d x 1140h	765w x 900d x 1985h	1015w x 900d x 1985h
Dimensions Internal	450w x 560d x 450h	1050w x 520d x 670h	1590w x 520d x 670h	450w x 530d x 1350h	700w x 530d x 1350h
Weight	180kg	260kg	312kg	261kg	301kg
Shelves	4, insulated	4, insulated	4, insulated	3, stainless steel	3, stainless steel
Adjustable Shelves	Yes	Yes	Yes	Yes	Yes
Port Hole	Yes	Yes	Yes	Yes	Yes
Internal Ventilation	Yes	Yes	Yes	Yes	Yes
Tropical Capable	Yes	Yes	Yes	Yes	Yes
Door	Solid	Solid	Solid	Solid	Solid
Door Style	Hinged	Hinged	Hinged	Hinged	Hinged
Door Open Sensor	Yes	Yes	Yes	Yes	Yes
Door Open Alarm	Yes	Yes	Yes	Yes	Yes
Lock	Yes	Yes	Yes	Yes	Yes
Castors	Yes	Yes	Yes	Yes	Yes
Controller	Microprocessor (E2003)	Microprocessor (E2003)	Microprocessor (E2003)	Microprocessor (E2003)	Microprocessor (E2003)
Interior	Stainless Steel	Stainless Steel	Stainless Steel	Stainless Steel	Stainless Steel
Housing	Zinc Plated Steel (s/steel optional)	Zinc Plated Steel (s/steel optional)	Zinc Plated Steel (s/steel optional)	Zinc Plated Steel (s/steel optional)	Zinc Plated Steel (s/steel optional)
Temperature Range	-40°C to -85°C	-40°C to -85°C	-40°C to -85°C	-40°C to -85°C	-40°C to -85°C
Internal Lighting	Yes	Yes	Yes	Yes	Yes
Backup Alarm Battery	Yes	Yes	Yes	Yes	Yes
Power Supply	230V / 50Hz	230V / 50Hz	230V / 50Hz	230V / 50Hz	230V / 50Hz
Refrigerant Type	R134A	R134A	R134A	R404A	R404A

E2003 - Microprocessors with two independent sections for settings and alarms (acoustic and visual).

# Platilab Next Freezers



Model No	PLATILAB NEXT 370 H	PLATILAB NEXT 550 H	PLATILAB NEXT 340 V-4-STD	PLATILAB NEXT 500 V-4-STD
Description	Chest	Chest	Upright	Upright
Capacity	370L	550L	340L	500L
Dimensions External	1780w x 855d x 1140h	2350w x 855d x 1140h	765w x 900d x 1985h	1015w x 900d x 1985h
Dimensions Internal	1050w x 520d x 670h	1590w x 520d x 670h	450w x 530d x 1350h	700w x 530d x 1350h
Weight	260kg	312kg	261kg	301kg
Shelves	4, insulated	4, insulated	3, stainless steel	3, stainless steel
Adjustable Shelves	Yes	Yes	Yes	Yes
Port Hole	Yes	Yes	Yes	Yes
Internal Ventilation	Yes	Yes	Yes	Yes
Tropical Capable	Yes	Yes	Yes	Yes
Door	Solid	Solid	Solid	Solid
Door Style	Hinged	Hinged	Hinged	Hinged
Door Open Sensor	Yes	Yes	Yes	Yes
Door Open Alarm	Yes	Yes	Yes	Yes
Lock	Yes	Yes	Yes	Yes
Castors	Yes	Yes	No	No
Controller	Microprocessor (ColdBrain™)	Microprocessor (ColdBrain™)	Microprocessor (ColdBrain™)	Microprocessor (ColdBrain™)
Interior	Stainless Steel	Stainless Steel	Stainless Steel	Stainless Steel
Housing	Zinc Plated Steel (s/steel optional)	Zinc Plated Steel (s/steel optional)	Zinc Plated Steel (s/steel optional)	Zinc Plated Steel (s/steel optional)
Temperature Range	-40°C to -85°C	-40°C to -85°C	-40°C to -85°C	-40°C to -85°C
Internal Lighting	Yes	Yes	Yes	Yes
Backup Alarm Battery	Yes	Yes	Yes	Yes
Power Supply	230V / 50Hz	230V / 50Hz	230V / 50Hz	230V / 50Hz
Refrigerant Type	R404A	R404A	R404A	R404A

ColdBrain™ Multifunction electronic controller (three microprocessors for superior reliability and redundant security).

## Iridium & Iridium Next Freezers



### Specifications

Model No	IRIDIUM 800 SV-3-STD	IRIDIUM NEXT 520 V-4-STD	IRIDIUM NEXT 800 V-5-STD
Description	Upright	Upright	Upright
Capacity	800L	520L	800L
Dimensions External	1086w x 890d x 1985h	730w x 854d x 1980h	1086w x 890d x 1995h
Dimensions Internal	906w x 609d x 1472h	586w x 613d x 1470h	906w x 609d x 1472h
Weight	310kg	235kg	250kg
Shelves	2, stainless steel	2, stainless steel	3, stainless steel
Adjustable Shelves	Yes	Yes	Yes
Port Hole	Yes	Yes	Yes
Internal Ventilation	Yes	Yes	Yes
Tropical Capable	Yes	Yes	Yes
Door	Solid, 3 insulated internal	4 Insulated Doors	5 Insulated Doors
Door Style	Hinged	Hinged	Hinged
Door Open Sensor	Yes	Yes	Yes
Door Open Alarm	Yes	Yes	Yes
Lock	Yes	Yes	Yes
Castors	Yes	Yes	Yes
Controller	Microprocessor (E2003)	Microprocessor (ColdBrain™)	Microprocessor (ColdBrain™)
Interior	Stainless Steel	Stainless Steel	Stainless Steel
Housing	Zinc Plated Steel (s/steel optional)	Zinc Plated Steel (s/steel optional)	Zinc Plated Steel (s/steel optional)
Temperature Range	-20°C to -45°C	-40°C to -86°C	-40°C to -86°C
Internal Lighting	Yes	Yes	Yes
Backup Alarm Battery	Yes	Yes	Yes
Power Supply	230V / 50Hz	230V / 50Hz	230V / 50Hz
Refrigerant Type	R404A	R404A	R404A

ColdBrain™ Multifunction electronic controller (three microprocessors for superior reliability and redundant security). Includes temperature graphic recorder.



# Irilab & Irilab Next Freezers



## Specifications

Model No	IRILAB 800 V-5-STD	IRILAB NEXT 520 V-4-STD	IRILAB NEXT 800 V-5-STD
Description	Upright	Upright	Upright
Capacity	800L	520L	800L
Dimensions External	1086w x 890d x 1995h	730w x 854d x 1980h	1086w x 890d x 1995h
Weight	364kg	237kg	364kg
Shelves - number	9	4 insulated, 3 stainless steel	5 insulated, 4 stainless steel
Shelves - stainless, adjustable	Yes	Yes	Yes
Port Hole	Yes	Yes	Yes
Internal Ventilation	Yes	Yes	Yes
Tropical Capable	Yes	Yes	Yes
Door	Solid	Solid	Solid
Door Style	Hinged	Hinged	Hinged
Door Open Sensor	Yes	Yes	Yes
Door Open Alarm	Yes	Yes	Yes
Lock	Yes	Yes	Yes
Castors	No	No	No
Controller	Microprocessor (E2003)	Microprocessor (ColdBrain™)	Microprocessor (ColdBrain™)
Interior	Stainless Steel	Stainless Steel	Stainless Steel
Housing	Zinc Plated Steel (s/steel optional)	Zinc Plated Steel (s/steel optional)	Zinc Plated Steel (s/steel optional)
Temperature Range	-40°C to -80°C	-40°C to -85°C	-40°C to -80°C
Internal Lighting	Yes	Yes	Yes
Backup Alarm Battery	Yes	Yes	Yes
Power Supply	230V / 50Hz	230V / 50Hz	230V / 50Hz
Refrigerant Type	R404A	R404A	R404A

E2003 - Microprocessors with two independent sections for settings and alarms (acoustic and visual).  
ColdBrain™ Multifunction electronic controller (three microprocessors for superior reliability and redundant security).



## Specifications

Model No	PLASMAFROST 3	PLASMAFROST 4	KRYOLAB 300 V	KRYOLAB 500 V
Description	Upright	Upright	Upright	Upright
Capacity	250L - 24x450ml	250L - 40x450ml	300L	500L
Dimensions External	895w x 1490d x 1760h	895w x 1490d x 1760h	600w x 620d x 1645h	745w x 780d x 1645h
Weight	625kg	675kg	80kg	100kg
Shelves	3	4	7, stainless steel	14, stainless steel
Adjustable Shelves	No	No	Yes	Yes
Port Hole	Yes	Yes	Yes	Yes
Internal Ventilation	Yes	Yes	Yes	Yes
Tropical Capable	No	No	Yes	Yes
Door	Solid	Solid	Solid	Solid
Door Style	Hinged	Hinged	Hinged	Hinged
Door Open Sensor	Yes	Yes	Yes	Yes
Door Open Alarm	Yes	Yes	Yes	Yes
Lock	Yes	Yes	Yes	Yes
Castors	Yes	Yes	No	No
Controller	Microprocessor (ColdBrain™)	Microprocessor (ColdBrain™)	External thermostat	External thermostat
Interior	Stainless Steel	Stainless Steel	Stainless Steel	Stainless Steel
Housing	Heavy-gauge, phosphate-coated steel	Heavy-gauge, phosphate-coated steel	Zinc Plated Steel (s/steel optional)	Zinc Plated Steel (s/steel optional)
Temperature Range	-75°C	-75°C	-15°C to -30°C	-15°C to -30°C
Internal Lighting	Yes	Yes	No	No
Backup Alarm Battery	No	No	No	No
Power Supply	230V / 50Hz	400V / 50Hz	230V / 50Hz	230V / 50Hz
Refrigerant Type	R600A	R404A	R600A	R600A

ColdBrain™ Multifunction electronic controller (three microprocessors for superior reliability and redundant security). Includes temperature graphic recorder.

# SECTION 4

## MONITORING SOLUTIONS



# MATOS<sup>®</sup> MONITORING SOLUTIONS

MATOS<sup>®</sup> Monitoring is a web based, automatic temperature monitoring system, enabling direct access to your fridge / freezer temperatures and records anywhere, at any time.



MATOS<sup>®</sup> Monitoring Technology can also be utilised in many other monitoring applications

Temperature | Gas or particle levels  
Oxygen / CO2 levels | Pressure | Humidity  
Ultra Low Temperature | Glycol



Take a look at the Monitoring demonstration site - [www.matosmonitoring.com](http://www.matosmonitoring.com) using the following:  
Username: matosdemo1 / Password: matosdemo1

New Zealand: Patent 596323 | Australia: Patent 2012336431 | Europe: Patent 12846969.9





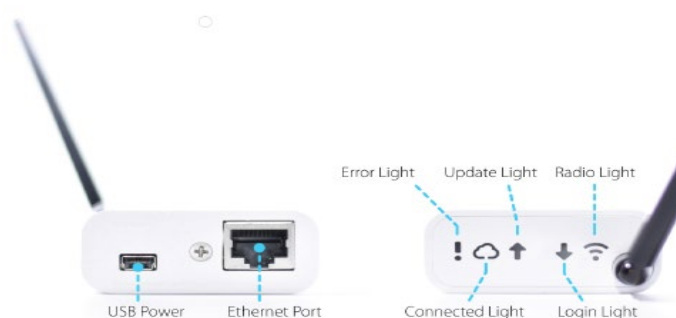
# MATOS® WIRELESS MONITORING KIT (MWM)

Rollex Medical proudly introduces our new exclusive Wireless Monitoring Kit (MWM) which can be retrofitted to any Refrigerator, Freezer, Cool-Room or Airspace in seconds.

This addition to the MATOS® Monitoring product range provides you with an easy to install solution with no technical expertise required while still providing you with the proven temperature monitoring system of choice using our MATOS® technology.

## How does the System Work?

Place the sensor tile anywhere inside your Refrigerator where you wish to monitor the temperature. The Sensor transmits the data to the Base Station wirelessly. The Base Station is connected to the Internet using an Ethernet cable and will pick up all transmitted data from the tile and upload it to our MATOS® Monitoring Azure Server. You then have access to your full temperature records online, automatic reporting and SMS/Email alerts using our MATOS® Monitoring technology.



## Providing the premium MATOS® Monitoring technology in a compact, easy to install solution:

- Fully automatic online monitoring
- Requires an internet connection
- Sensors can be mounted straight onto any surface with easy adhesive strip
- Infinitely expandable
- Instant user alerts upon temperature breach
- Replaceable battery which lasts up to 18 months
- 30 days internal memory
- Cloud storage integrity guaranteed for at least ten years
- NZ, Australian & FCC Compliance
- Enjoy the range of MATOS Monitoring Features without an invasive installation
- Powerful yet simple reporting system
- Compatible with any existing MATOS Monitoring System products
- Up to **40 Wireless Sensors** can be connected to a SINGLE Ethernet Base Station Receiver Unit!\*

*\*Effective radio communication distance is 210m line of sight.*

*Standard MATOS® Monitoring terms and conditions apply. Extra charges may be applicable or excess sms alerts.*

# Retrofit Monitoring

## M-310

MATOS® Monitoring can now be retrofitted to any fridge, freezer, cool-room or airspace. This can be achieved with the use of our new MATOS® M-310 stand-alone monitoring unit. Developed and built in New Zealand, the M-310 is a robust, secure monitoring unit that is wifi and cellular compatible for all your monitoring environments.



We also offer tailor-made options for retrofitting our complete Fridge Rescue System and Monitoring M-R01 and M-R02 units into compatible fridges and freezers.



MATOS® M-310 is a standalone monitoring unit that is quick and easy to install and provides most of the premium MATOS® Monitoring features in a compact, robust enclosure:

- Fully automatic, online monitoring – [www.matosmonitoring.com](http://www.matosmonitoring.com)
- Requires internet connection (wifi & cellular options available)
- Wall mount or benchtop monitoring unit
- Supports up to 6 digital temperature sensors/probes
- Supports 2 digital inputs (I/O) e.g. monitor power or door status
- Variable probe lengths and configurations available
- 36 hour Battery Backup with instant power switching
- 30 days internal log memory
- Cloud storage data integrity guaranteed for at least 10 years
- New Zealand and Australian compliant.

Standard MATOS® Monitoring terms and conditions apply. Extra charges may be applicable for excess sms alerts.

# Remote Monitoring

## Control *by* WEB



ControlByWeb products are high-end components for remote monitoring and control applications. Our products are used to monitor and control many different types of equipment and systems in real-time from any computer using a web browser. Our products can be used as stand-alone devices in simple applications, offering a complete solution requiring no additional equipment and they can also be used as building-blocks in large systems.

### How They Work

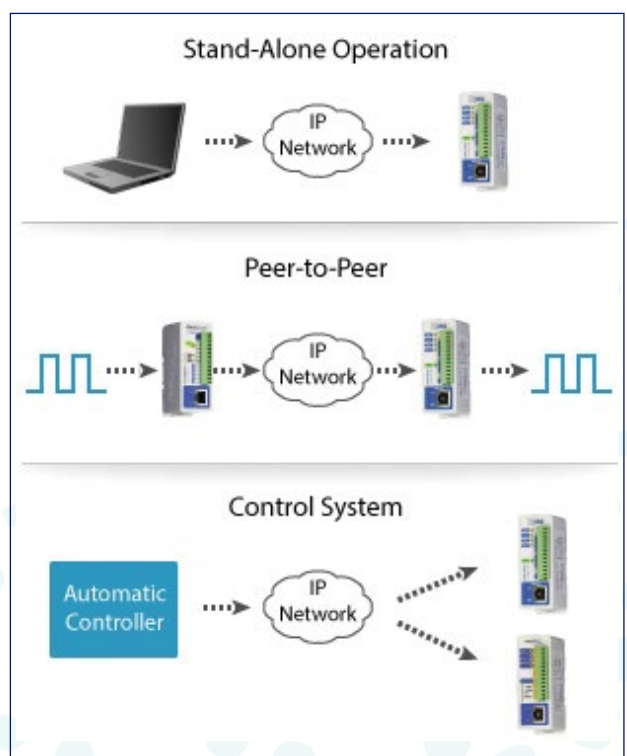
Each ControlByWeb product has a small combination of I/O (inputs & outputs) and a built-in web server. Sensors, switches, voltages, etc., can be connected to the inputs for monitoring various parameters, conditions, or events such as temperatures, voltages, or alarms. Because our products have a built-in web server, users can view input parameters and control relay outputs using a simple web page from just about any web browser. In addition, our products support multiple protocols so they can communicate directly with computers, PLCs, and automation controllers in more advanced control systems.

### Example Applications

ControlByWeb products can be used to monitor temperature, humidity, power, tank levels, pressure, the status of doors, windows, production machines, and much more.

### Why ControlByWeb

ControlByWeb products are designed to be extremely robust and reliable. Although they are affordably priced, no shortcuts were taken in their design, and no compromises were made in the parts used. Some would say that our products are "over engineered" because there are many internal parts that could be replaced with less expensive versions or even removed to save money, but we believe it's more important to build them right than to build them



cheap. Our products are carefully made in the USA and each product is inspected many times at different levels of production and tested before it is shipped. Our firmware is tested both manually and automatically for long time periods to verify its integrity before it is released. These are just a



# LogTag® Data Logging System



LogTag® products are designed to meet the growing demand for cost effective electronic environmental recording solutions.

Combining state of the art technology, innovative design and high volume manufacturing techniques, the LogTag® system provides the most cost effective, high performance environmental data logging system available for today's market.

LogTag® products are used in a huge number of different applications including widespread use in food and pharmaceutical temperature and/or humidity monitoring for both storage and shipping. Our products are also used for education and research with products holding approvals with many world recognised organisations such as the World Health Organisation.

## Applications

The LogTag's® versatility and low-cost make it the preferred choice for many applications in these sectors.

- Cold chain management
- Medical and pharmaceutical environments
- Agricultural production

LogTag® is a battery powered, low cost, robust data logging solution.

The Logtag® Data Logger is a "thermometer with a memory" that has been designed to record temperatures from -40°C to +65°C. It features a data logging memory which can store over 7000 temperature readings and a separate, rolling, 30 day statistical max/min reading and duration memory.

The display is designed to show 'at a glance' if temperature excursions have occurred for both the current reading and up to 30 days in the past. Details of any excursions can be checked directly by inspecting the statistics history on the recorder's display or in more detail by downloading the logged data.

Logged temperature data can be downloaded and analysed to display data in chart, table or statistical formats and allows electronic archiving, export or transmission of the data in support of sophisticated data management systems.

- Transport and shipping
- Monitoring of catering equipment in cafes, fast-food outlets and restaurants
- HVAC Systems
- Medical and agricultural research
- Storage and warehousing
- Monitoring of machinery and equipment



## Low cost

LogTag® data loggers are low-cost loggers that break the price barrier to continuous, extensive logging. Even large numbers of LogTags® are generally cheaper than traditional multi-channel loggers and can be easily installed and deployed.

## Visual alarm indicator

The LogTag® is the perfect choice for applications in which visual alarm notifications are crucial. A flashing LED indicates that the pre-configured temperature alarm range has been violated. It's then advisable to perform a comprehensive analysis of the readings on a PC. If the LED does not flash no further analysis is necessary. This feature is a real time-saver when large number of LogTags® are being used.

## Small and robust

The LogTag® is incredibly small considering its features and its robust polycarbonate housing will protect it from external shocks.

## Technical details

Temperature range: -40°C ~ +85°C

Resolution: < 0.1°C for -40°C ~ +40°C  
< 0.2°C for +40°C ~ +80°C

Accuracy:

Better than  $\pm 0.5^{\circ}\text{C}$  for -10°C ~ +40°C.

Better than  $\pm 0.7^{\circ}\text{C}$  for -10°C ~ -30°C & +40°C ~ +60°C

Better than  $\pm 0.8^{\circ}\text{C}$  for -30°C ~ -40°C & +60°C ~ +80°C

Log size: 8,000 readings

Sensor reaction time:

Typically less than 5 minutes (T90) in moving air

Sampling rate: Adjustable, 1 minute to several hours

Power source: Onboard 3V Lithium battery

Battery life: Average 2 - 3 years of normal use

Size: 86mm (L) x 54.5mm (W) x 8.6mm (H)

Weight: 35g

Case Material: Polycarbonate

## Other features:

- Visual alarm (LED) indicates temperature limit violations
- Start the logger with your PC or with the logger's 'Start' button
- Set a start delay to avoid recording unnecessary readings
- Record an inspection mark in the log by pushing the 'Start' button
- Optional clearing of alert indication by push button
- 'Low Battery' warning indication in software
- The hole in the LogTag's® housing makes it easy to hang or attach.



## Rollog Temperature Monitor



### Kits = Software + Reader + Case + Thermocron

The eTemperature software, reader, case and thermocron are supplied as a kit. The software can be freely copied onto multiple PCs and the reader moved between PCs. Additional loggers and readers may be purchased separately.

### eTemperature Software

eTemperature allows you to quickly and easily:

- Setup the Thermocron's sample rate, start delay, high and low alarm limits, and rollover option
- Download the results from the Thermocron to the PC
- Display the results as a table
- Display the results as a graph. The graph supports panning and zooming to easily identify problems
- Save results for later recall
- Export results to Microsoft Excel, Microsoft Word, and email results.

### USB Reader

The USB reader provides a fast and easy connection between the Thermocron and PC. It also has two connectors for the Thermocron.

Rollog temperature loggers (thermocrons) are a thermometer with memory. They continually monitor the temperature and then record the date, time and temperature in memory. These readings can be then downloaded to a computer to be viewed, saved and reloaded at a later date.

This allows you to know exactly what the temperature was at all times. You can determine if your goods are usable, if something is too hot or cold, or to prove that everything is acceptable. The date and time information allows you to know exactly when a problem occurs and can often answer the why and when questions.

The thermocrons are constructed of stainless steel and are almost indestructible. They are also water resistant so they can be washed, submersed and sterilised.

# SECTION 5

## MEDICAL CARE





Antimicrobial catheter lock system to provide patency and infection control.

## Prophylaxis against catheter related bloodstream infections:

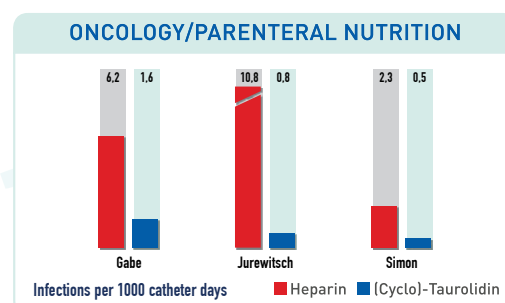
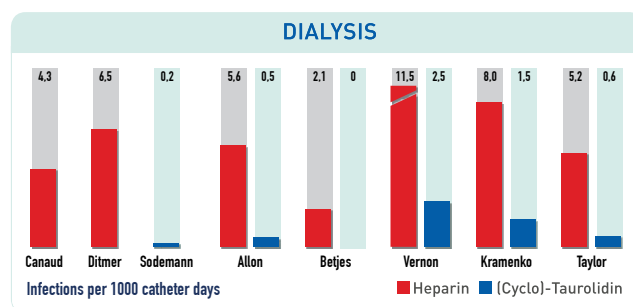
Central venous catheters (CVC) are used as short or long term vascular access devices in haemodialysis, oncology, ICU and total parenteral nutrition. High risks for CVC malfunction are catheter related infections (CRI). These infections may be triggered by microbial colonization of the catheter and the microorganisms can spread from here to the bloodstream. CRI may develop septic symptoms which require the immediate removal of the catheter.

Taurolock® catheter lock solutions do not contain antibiotics and were developed for prophylactic use. They reduce catheter related infections significantly (~ 90%).

The combination of citrate (4%) with (cyclo)-taurolidine and heparin/urokinase has excellent anticoagulative and anti-microbial properties also against resistant microorganisms like MRSA and VRE. Therefore Taurolock® is recommended in different guidelines such as the Hygiene Guidelines completing the German Dialysis standard, the guidelines from the German society of applied Hygiene in Dialysis and the evidence-based

## Taurolock® is safe:

- The concentration of 4% citrate in Taurolock® is safe and efficient – according to the recommendation of the FDA (ref.: FDA Warning letter, April 2000).
- No hypocalcaemic effects are observed in contrast to highly concentrated citrate solutions (30% resp. 46,7%) e.g. arrhythmia, cardiac arrest\*, emboli\*\*, tingling fingers and metallic taste\*\*\*.
- Taurolock® is biocompatible and non toxic.
- In contrast to highly concentrated citrate there is no protein precipitation if using Taurolock®\*\*\*\*.



\* Punt, C.D., Boer, W.e. Cardiac arrest following injection of concentrated trisodium citrate, Clinical Nephrology, 2008, 69: 117-118.

\*\* Willicombe, M.K., Vernon, K., Davenport, A. Embolic Complications From Central Venous Hemodialysis Catheters Used With Hypertonic Citrate Locking Solutions, American Journal of Kidney Diseases, 2010, 55: pp 348 - 351.

\*\*\* Polaschegg, H.D., Sodemann, K. Risks related to catheter locking solutions containing concentrated citrate, Nephrol Dial Transplant. 2003, 18: 2688-2690.

\*\*\*\* Schilcher, G. Polaschegg H.D. et al. Hypertonic Trisodium Citrate Induces Protein Precipitation in Hemodialysis Catheters, selected abstracts, 2011.



# SECTION 6

## AFTER SALES & ACCESSORIES



## Preventative Maintenance

### What is Preventative Maintenance?

A refrigerator or freezer is one of the hardest working appliances in our workplace - it is working 24 hours a day, 365 days a year without taking a rest and little attention is usually given to it. Rollex Medical have a comprehensive Preventative Maintenance Programme which can significantly increase the life and efficiency of your refrigeration equipment. By implementing routine preventative maintenance, you can save up to 10 percent on refrigeration energy costs and all refrigeration equipment needs preventative maintenance to keep it in the best operating condition. Good service can also mean the difference between a few mechanical malfunctions or continuous problems.



### Extended Warranty

Rollex Medical offer a 3 Year Extended Warranty if you sign up for our Preventative Maintenance Programme. The Preventative Maintenance Programme also entitles you to FREE telephone support for any adjustments to the refrigerator/freezer that may be required from time to time.

Your Extended Warranty is valid for three years covering all Parts and Labour providing that:

1. Preventative Maintenance is carried out annually during the warranty period
2. A Power Surge Protector or Uninterrupted Power Supply is fitted to protect the unit
3. A completed Warranty Document is filled out and returned to Rollex Medical (NZ) Ltd

If the conditions above are not carried out, then the standard warranty of 12 months from date of purchase applies.

### Preventative Maintenance Programme

Our skilled technicians will complete a comprehensive 20 point checklist and also arrange for complete repairs if required.

An example of the service duties includes:

- Clean and check condenser
- Check interior and exterior fans
- Check piping for damage
- Check interior/exterior lighting
- Check surge protection
- Check drains are clear
- Clean compressor and surrounding area
- Check test accuracy (data log test)
- Clean under, behind and around unit
- Check clearance around fridge area
- Check door and seal for damage
- Check power cable is in good condition
- Check evaporator for icing
- Check interior airflow
- Check status and settings
- Check probe is in free air



The Rollex UPS Series has been specially adapted for use on medical and other refrigerators by providing a clean, safe and regulated power supply and power correction factor. This provides extended battery backup time if a power cut occurs, and therefore protecting your valuable product.

## Multiple Configurations

Available in 1 or 2 string battery configuration allowing for a run time of up to 8 hours or more.\*

## High Efficiency

Minimal heat dissipation ensures maximum efficiency. Be sure to locate UPS in as cool environment as possible, as this will extend UPS life.

## Self Monitoring

All UPS models feature a self monitoring and fault diagnosis function, alerting you if a problem is detected.

## Power Factor Correction

Improves power factor on refrigerators, reducing the load of high-current compressor starts and extending the life of the components and saving power.

\* Run time calculated based on first year use testing by an independent tester on a Vaccine Fridge. Battery degradation will occur over the battery life and therefore fridge run times will reduce over the years. Batteries can easily be changed in the future.

Fridge Model or Equivalent	Door Type	Single String 2k UPS 7Ah approx. runtime	Double String UPS 9Ah approx. runtime
Small Fridge (150L)	Glass	2hrs 46m	8hrs 15m
Large Fridge (250L)	Glass	2hrs 46m	8hrs 22m
Small Fridge (150L)	Solid	2hrs 47m	8hrs 45m
Large Fridge (250L)	Solid	2hrs 38m	10hrs 2m
Large Fridge (350L)	Solid	3hrs 25m	10hrs 1m

Fridge average runtimes calculated by independent tester in recommended ambient conditions for refrigerators.

## Surge Protection

Built in surge protection helps protect your medical fridge from dangerous power spikes and surges such as blackouts and lightning strikes.

## Advanced Microprocessor Controller

The advanced microprocessor controller and LCD display make the 2kVA UPS simple and easy to understand with available notifications for power loss and battery faults, requiring no user maintenance.



Power related problems are the number one cause of damage to equipment and lost data (damage not covered by product warranties). We recommend Belkin surge protectors which are built to the highest standards and are backed by a genuine lifetime product replacement warranty.

## Standard Range

SurgeMaster Single Surge Protector

SurgeCube Double Surge Protector

Specifications: 2.40 kVA - 1181 J - 250 V AC Input - 250 V AC Output

- Surge Protected AC Outlets
- EMI/RFI Noise Filtration: 150kHz~100MHz: Electromagnetic interference/ radio frequency interference causes AC line contamination.
- Joule Rating: 1181J
- Protected and Earthed Indicators
- Belkin's Lifetime Warranty







# Rollex MEDICAL

NSW, QLD, ACT, WA Sales Office  
11 Vangeli Street, Arndell Park, NSW 2148

VIC, TAS, SA, NT Sales Office  
3/16 Curie Court, Seaford, VIC 3198

Nationwide Phone: 1300 880 441  
Nationwide Fax: 1300 880 451

Email Sales:  
[sales@rollexmedical.com](mailto:sales@rollexmedical.com)

Email Service:  
[service@rollexmedical.com](mailto:service@rollexmedical.com)

Australia

[www.rollexmedical.com.au](http://www.rollexmedical.com.au)