

# RolleX MEDICAL

**MEDICAL REFRIGERATION AND TEMPERATURE  
MONITORING SPECIALISTS**



Australia



## Who We Are

Rollex Medical is a family based medical refrigeration and monitoring company operating throughout New Zealand and Australia, with offices and warehouses in Auckland, Sydney and Melbourne.

We now build our patented MATOS® Medical Fridges in Europe which are shipped worldwide. Over the last six years we have developed and patented web based technology to keep meticulous and robust records in medical fridges. Our market leading MATOS® Cloud fridges also have a built in automatic rescue function should the fridge controller fail.

Our main focus and ethos is to create and maintain a total ongoing support package for our customers and ensure that we attend to requests in a timely and helpful way. Our friendly staff are always only a phone call away.

## What We Do

Rollex Medical are the exclusive Australasian distributors for MATOS®, LEC, and Arctiko medical refrigerators, freezers, incubators and thermostatic chambers.

Combine this with our unique web based monitoring and data-logging products, alarm systems and second to none service and technical support for a

total solution for your temperature sensitive storage needs.

We have traditionally sold to and serviced customers in the area of medical refrigeration. We have a large infrastructure throughout Australia and New Zealand to provide Australasian wide service.

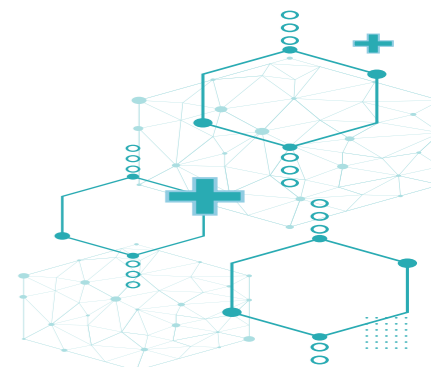
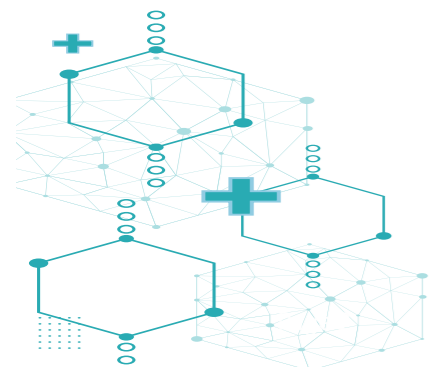
## Why Choose Us?

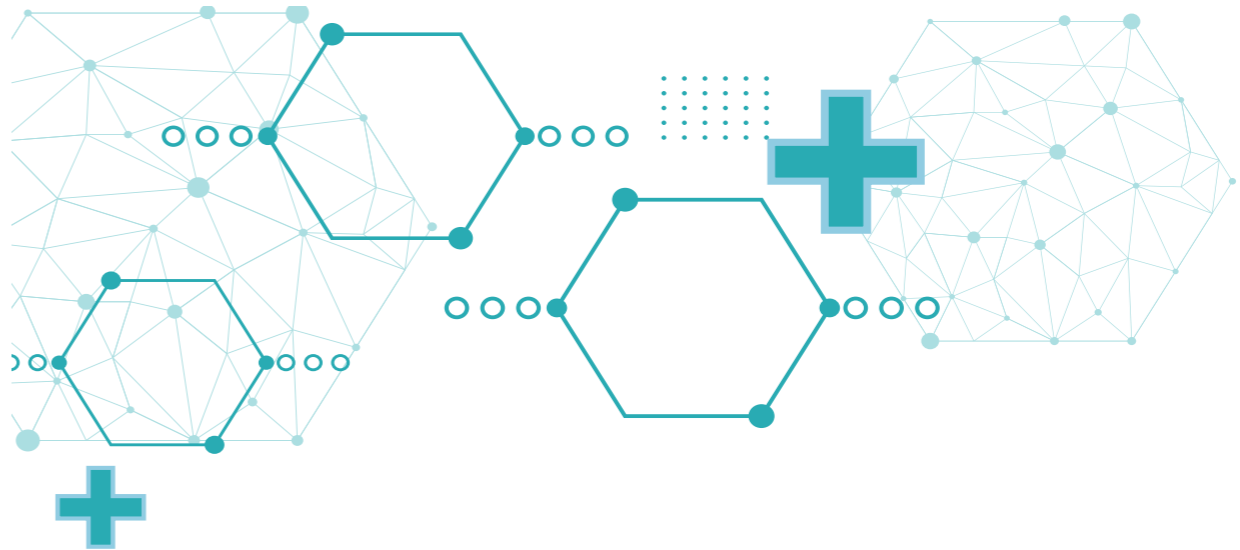
Rollex Medical are New Zealand's biggest and most trusted supplier of Medical Refrigeration products. With over 15 years experience in the industry, we will help you procure the best cold-chain compliant medical fridge for your needs. We will look after you for the life of your fridge. With Rollex Medical, purchasing a fridge is the beginning of a long-lasting relationship.

We will help you gain and maintain Cold Chain Compliance. We provide an annual service as part of our preventative maintenance programme, and even teach you how to check up on this should you have concerns between services, with one of our affordable data-logging systems. We also provide a free 24 hour support line for any technical issues or questions.

# INDEX

Section 1 - MATOS® .....	5
What is MATOS® .....	6
Matos® PLUS Eco .....	7
Matos® PLUS Cloud .....	8
Matos® Monitoring .....	9
Matos® PLUS Refrigerators .....	10
Matos® PLUS Freezers .....	12
Matos® Thermostatic Chambers .....	14
Matos® ARIA Range .....	16
Matos® Excel Range .....	18
Matos® RFID Refrigerator Range .....	20
Section 2 - LEC MEDICAL .....	22
Introducing Lec Medical .....	23
Lec Pharmacy Range .....	24
Lec Freezers .....	25
Lec Laboratory Range .....	26
Section 3 - ARCTIKO .....	27
Introducing ARCTIKO .....	28
Ultra Cold Freezers .....	29
BBR Blood Refrigerators .....	30
Section 4 - DATA LOGGING & MONITORING .....	31
Matos® Wireless Monitoring (MWM) Kit .....	33
Retrofit Monitoring - Matos® M-310 .....	34
Remote Monitoring - ControlByWeb .....	35
LogTag® Data Logging System .....	36
Rollog Temperature Monitor .....	38
Section 5 - AFTER SALES & ACCESSORIES .....	39
Preventative Maintenance .....	40
Battery Backup UPS .....	41
Outlet Surge Protectors .....	42

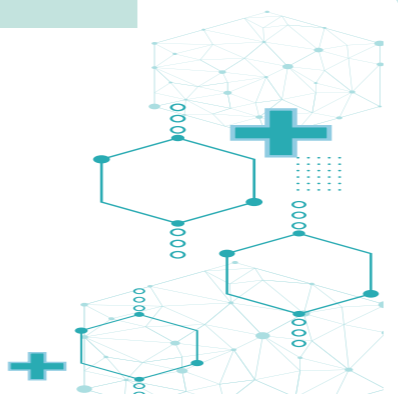
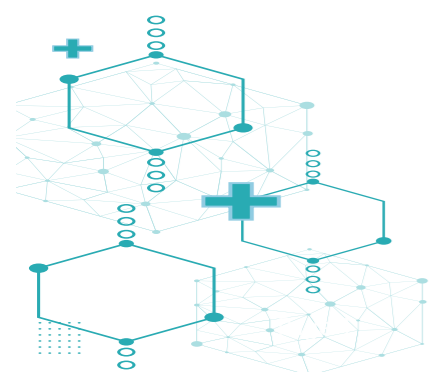




# SECTION 1 MATOS®



- The specialists for medical and pharmaceutical refrigeration
- Medical Refrigeration
  - Vaccine / Pharmacy Refrigeration
  - RFID Refrigeration
  - Laboratory Refrigeration (spark free)
  - Bloodbank Refrigeration
  - Low Temperature Freezers
  - Ultra Low Temperature Freezers
  - Temperature Monitoring Solutions







### What is Matos®?

Matos® is a new range of purpose built Medical, Laboratory & Vaccination Refrigerators, Freezers and Thermostatic Chambers utilising internationally patented technology. The cabinet and componentry have been specially designed for use in the Medical field.

### Why choose Matos®?

The Matos® range of fridges and freezers are built to the highest specifications and feature fast cool-down, sophisticated PID microprocessor controller with clear LCD display, an auto-diagnostic function and an unique fan control for better temperature maintenance. We also offer models with Hot Gas Defrost and Stainless Steel interiors.

### What is Matos® Eco and Matos® Cloud?

The Matos® Eco range is manufactured in Europe to meet the highest standards, are energy efficient, have built-in fan management, locks fitted as standard, automatic defrost and come with solid or glass door options.

The Matos® Cloud is our premium range with the addition of our Data Acquisition & Transfer Module and Fridge Rescue System offering:

- Built-In Monitoring  
Continuous temperature monitoring with email and optional SMS alerts ensures a robust complete monitoring record of your product even with loss of power.
- Thermostat Override  
The patented control system ensures that in the event of a component failure, our Fridge Rescue System steps in and will keep the fridge within the optimum temperature range.
- Battery Backup  
Our Matos® Cloud range include a smart, compact UPS built into the fridge so the temperature monitoring will continue during a power failure, ensuring an uninterrupted temperature log. (Backup time up to 36 hours). Automatic battery maintenance and smart-charging cycle ensures maximum battery life.



Aluminium or Stainless Interior  
Modern Refrigeration Technology

The Matos® PLUS Eco series are a new range of purpose built Medical and Vaccination Refrigerators, Freezers and Thermostatic Chambers. The cabinet and componentry have been specially designed for use in the Medical field.

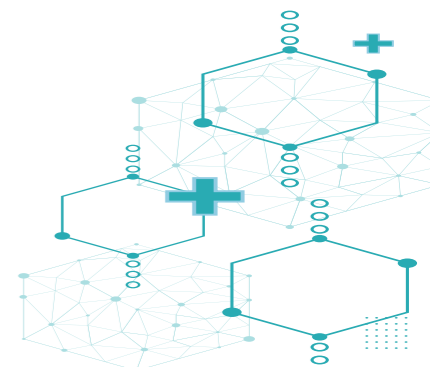
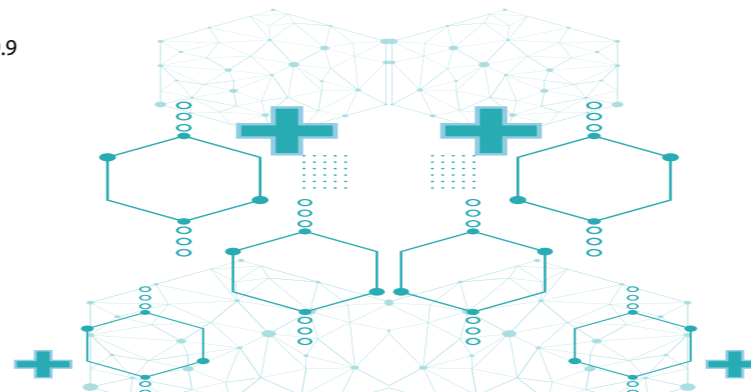
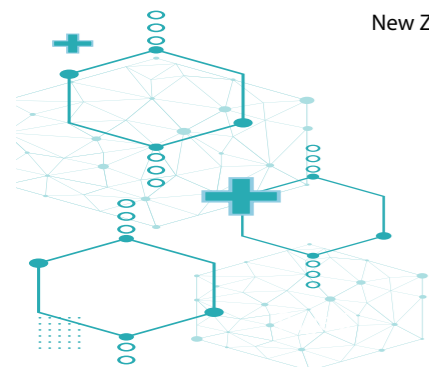
### Key Features include:

- Fast cool down
  - Sophisticated microprocessor controller with clear LCD display
  - Auto-diagnostic function
  - Automatic defrost
  - Unique fan control for better temperature maintenance
  - Access Port as standard
  - Door lock as standard
  - Internal LED light
  - Glass door option available on most models
  - Temperature and door open alarms
  - Other options include Hot Gas Defrost and stainless steel interiors
- plus...

### 3 Year Extended Warranty

When serviced by an approved service technician, the warranty is extended to 3 years.

New Zealand: Patent 596323 | Australia: Patent 2012336431 | Europe: Patent 12846969.9



# matos® PLUS Cloud

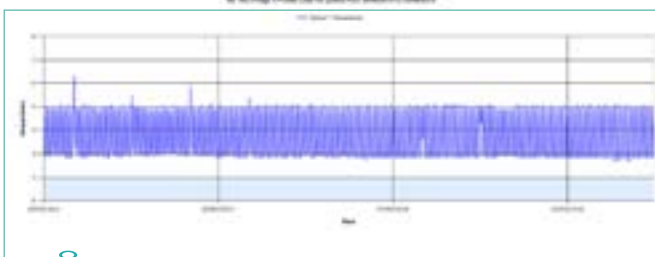
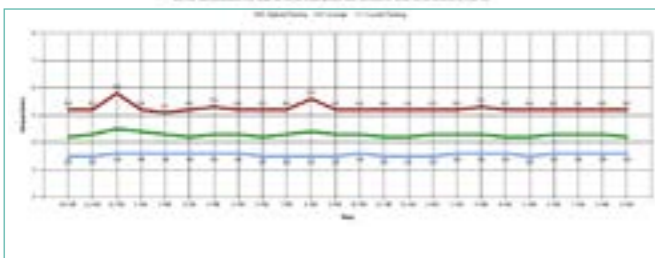
# matos® Monitoring

The Matos® PLUS Cloud series includes all of the features of the Eco units, but with our unique, patented web monitoring and Fridge Rescue System.

### Additional Features include:

- In the event of a fridge component failure, the system will send an alert, bypass the fridge's own controller and automatically maintain temperature until an engineer can attend and rectify the problem. This feature is unique to us, patented and has already saved thousands of dollars worth of product which would otherwise have been destroyed throughout New Zealand and Australia
- Unique website login for each client
- Temperature and door status constantly monitored
- Alerts sent via the website to designated users in the event of an alarm
- Alarms include temperature too high or low, door open, power loss, data communication lost
- Optional monitoring is available for simulated sample temperature and external ambient temperature
- The monitoring unit has its own UPS backup and will store data for up to 36 hours in the event of a power loss
- If internet connectivity is lost, the unit will store all the data and automatically upload when connectivity is re-established
- All data is stored on the secure website for access at any time for compliance purposes
- Users can set up automated reports by email
- Unlimited free email alerts are included in the service
- SMS alerts are available as an optional extra if required.

Matos® Monitoring is a web-based automatic temperature monitoring system, enabling direct access to your fridge temperatures and records, anywhere at any time.



### Dedicated Server

Matos® Monitoring features a dedicated, off-site secure server ensuring fast access speeds when information is critical.

### Email and SMS Alerting

Temperature excursions and status alarms are sent via email message and optional SMS message within seconds.

### Ease of Access

Access fridge temperatures and statuses from any web-capable device such as a computer, smartphone or tablet.

### Clear Concise Information

See temperature history and fridge status at a glance with easy to read colour coded indicators.

### Full Alert History

Complete alert history makes audit trails a breeze. See who has responded, what action was taken and when, with the click of a button.

### Automatic and Custom Reports

Get reports delivered direct to your email inbox or create custom PDF reports for any period.

### Wireless Capability

Internet connection via wired or secure wireless network.

### Robust Database

Double backup and RAID system ensures data is kept safe and secure for 10 years plus.

### Battery Backup

With smart compact UPS built into the fridge the temperature monitoring will continue during a power failure, ensuring an uninterrupted temperature log. (Backup time up to 36 hours).

Automatic battery maintenance and smart-charging cycle ensures maximum battery life.

### Outgoing Communication Only

As there are no incoming connections to the monitoring device the network security of your business is never compromised.

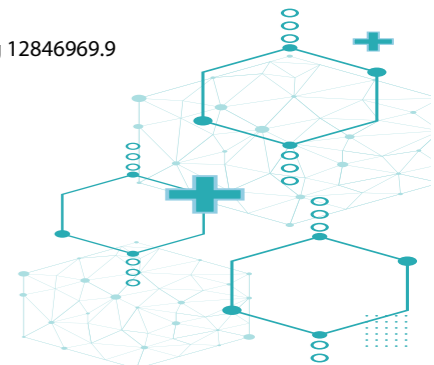
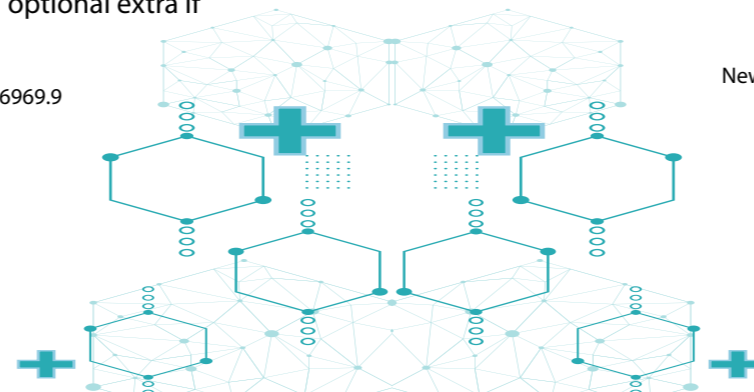
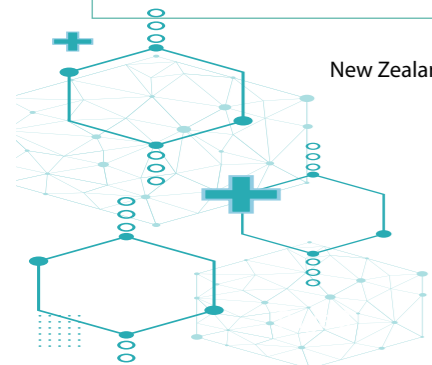
### Self Reporting/Analysing

Self monitored device ensures that any hardware problems are reported to the user ensuring a quick response.

Take a look at the Monitoring demonstration site [www.matosmonitoring.com](http://www.matosmonitoring.com) using the following:  
Username: matosdemo1 / Password: matosdemo1

New Zealand: Patent 596323 | Australia: Patent 2012336431 | Europe: Patent Pending 12846969.9

New Zealand: Patent 596323 | Australia: Patent 2012336431 | Europe: Patent Pending 12846969.9





# matos<sup>®</sup> PLUS Refrigerators

The MATOS<sup>®</sup> PLUS Refrigerator series is a new range of purpose built Medical & Vaccination Refrigerators utilising patented

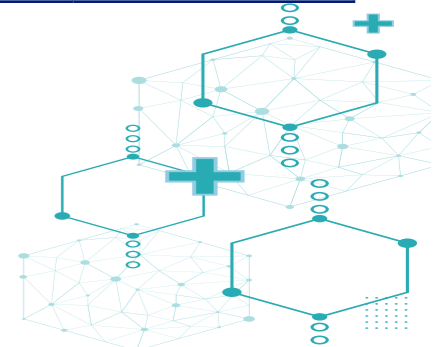
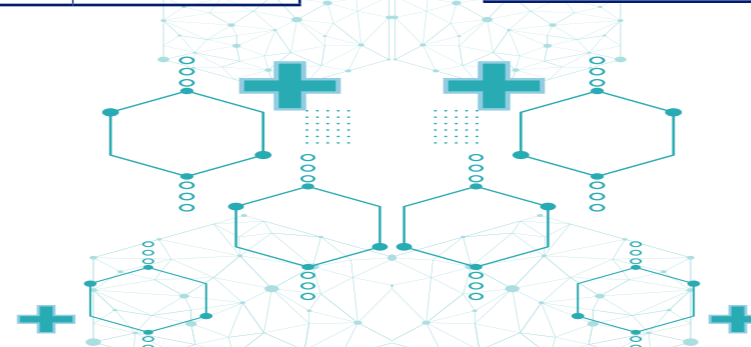
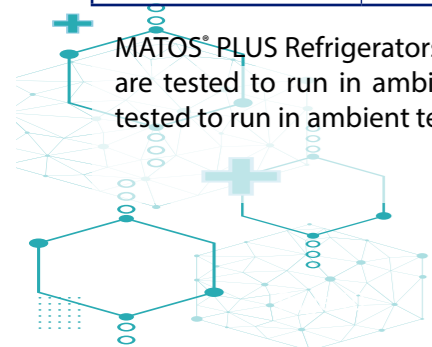


## Specifications

Standard features for all models	MATOS <sup>®</sup> Eco 68 R MATOS <sup>®</sup> Cloud 68 R	MATOS <sup>®</sup> Eco 150 R MATOS <sup>®</sup> Cloud 150 R	MATOS <sup>®</sup> Eco 200 R MATOS <sup>®</sup> Cloud 200 R	MATOS <sup>®</sup> Eco 250 R MATOS <sup>®</sup> Cloud 250 R	MATOS <sup>®</sup> Eco 300 R MATOS <sup>®</sup> Cloud 300 R
Description	On/Under-Bench	On/Under-Bench	Freestanding	Freestanding	Freestanding
Gross Capacity	68L	150L	200L	250L	300L
Dimensions External	570w x 830d x 600h	620w x 800d x 860h	620w x 800d x 1060h	620w x 800d x 1260h	620w x 800d x 1460h
Dimensions Internal	470w x 300d x 430h	520w x 420d x 660h	520w x 420d x 860h	520w x 420d x 1060h	520w x 420d x 1260h
Max shelf workload	10kg	10kg	10kg	10kg	10kg
Max unit workload	20kg	30kg	40kg	50kg	60kg
Door	Solid/Glass option	Solid/Glass option	Solid/Glass option	Solid/Glass option	Solid/Glass option
Weight	32kg	54kg	59kg	69kg	75kg
Shelves fit/max	2/2	3/4	3/4	4/6	5/7
Gas defrost	Optional	Optional	Optional	Optional	Optional
Door Style	Hinged	Hinged	Hinged	Hinged	Hinged
Door Open Sensor	Yes	Yes	Yes	Yes	Yes
Door Open Alarm	Yes	Yes	Yes	Yes	Yes
Lock	Yes	Yes	Yes	Yes	Yes
Castors	Optional	Optional	Optional	Yes	Yes
Air convection	Fan Forced Air	Fan Forced Air	Fan Forced Air	Fan Forced Air	Fan Forced Air
Controller	Microprocessor with LCD graphic display	Microprocessor with LCD graphic display	Microprocessor with LCD graphic display	Microprocessor with LCD graphic display	Microprocessor with LCD graphic display
Interior	Aluminium (s/steel optional)	Aluminium (s/steel optional)	Aluminium (s/steel optional)	Aluminium (s/steel optional)	Aluminium (s/steel optional)
Housing	Powder coated steel (s/steel optional)	Powder coated steel (s/steel optional)	Powder coated steel (s/steel optional)	Powder coated steel (s/steel optional)	Powder coated steel (s/steel optional)
Colour	White/Teal	White/Teal	White/Teal	White/Teal	White/Teal
Temperature Range	0°C to +15°C	0°C to +15°C	0°C to +15°C	0°C to +15°C	0°C to +15°C
Temperature Resolution	0.1°C	0.1°C	0.1°C	0.1°C	0.1°C
Temperature Fluctuation	+/- 0.5°C	+/- 0.5°C	+/- 0.5°C	+/- 0.5°C	+/- 0.5°C
Power	160W	170W	170W	330W	330W
Access Port	Yes	Yes	Yes	Yes	Yes
Refrigerant Type	R1234	R1234	R1234	R1234	R1234
Additional features for Cloud models	MATOS <sup>®</sup> Cloud 68 R	MATOS <sup>®</sup> Cloud 150 R	MATOS <sup>®</sup> Cloud 200 R	MATOS <sup>®</sup> Cloud 250 R	MATOS <sup>®</sup> Cloud 300 R
Web monitoring	Yes	Yes	Yes	Yes	Yes
DAQ Backup Battery (x2)	12V sealed lead acid (x2 6V 3.5Ah)	12V sealed lead acid (x2 6V 3.5Ah)	12V sealed lead acid (x2 6V 3.5Ah)	12V sealed lead acid (x2 6V 3.5Ah)	12V sealed lead acid (x2 6V 3.5Ah)
LAN connection	RJ45 ethernet	RJ45 ethernet	RJ45 ethernet	RJ45 ethernet	RJ45 ethernet

MATOS <sup>®</sup> Eco 400 R MATOS <sup>®</sup> Cloud 400 R	MATOS <sup>®</sup> Eco 493 R MATOS <sup>®</sup> Cloud 493 R	MATOS <sup>®</sup> Eco 625 R MATOS <sup>®</sup> Cloud 625 R	MATOS <sup>®</sup> Eco 1365 R MATOS <sup>®</sup> Cloud 1365 R	MATOS <sup>®</sup> Eco 1460 R MATOS <sup>®</sup> Cloud 1460 R
Freestanding	Freestanding	Freestanding	Freestanding	Freestanding
400L	493L	625L	1365L	1460L
620w x 800d x 1860h	660w x 810d x 1990h	750w x 860d x 1990h	1480w x 860d x 1990h	1450w x 950d x 1970h
520w x 420d x 1660h	510w x 640d x 1510h	600w x 690d x 1510h	1310w x 690d x 1510h	1340w x 750d x 1460h
10kg	20kg	30kg	30kg	30kg
70kg	100kg	100kg	100kg	100kg
Solid/Glass option	Solid/Glass option	Solid/Glass option	Solid/Glass option	Solid/Glass option
90kg	105kg	115kg	185kg	200kg
6/10	6/11	6/11	2x6/11	2x6/11
Optional	Optional	Optional	Optional	Optional
Hinged	Hinged	Hinged	Hinged	Hinged
Yes	Yes	Yes	Yes	Yes
Yes	Yes	Yes	Yes	Yes
Yes	Yes	Yes	Yes	Yes
Yes	Yes	Yes	Yes	Yes
Fan Forced Air	Fan Forced Air	Fan Forced Air	Fan Forced Air	Fan Forced Air
Microprocessor with LCD graphic display	Microprocessor with LCD graphic display	Microprocessor with LCD graphic display	Microprocessor with LCD graphic display	Microprocessor with LCD graphic display
Aluminium (s/steel optional)	Aluminium (s/steel optional)	Aluminium (s/steel optional)	Aluminium (s/steel optional)	Aluminium (s/steel optional)
Powder coated steel (s/steel optional)	Powder coated steel (s/steel optional)	Powder coated steel (s/steel optional)	Powder coated steel (s/steel optional)	Powder coated steel (s/steel optional)
White/Teal	White	White	White	White
0°C to +15°C	0°C to +15°C	0°C to +15°C	0°C to +15°C	0°C to +15°C
0.1°C	0.1°C	0.1°C	0.1°C	0.1°C
+/- 0.5°C	+/- 0.5°C	+/- 0.5°C	+/- 0.5°C	+/- 0.5°C
330W	400W	400W	550W	550W
Yes	Yes	Yes	Yes	Yes
R1234	R290	R290	R290	R290
MATOS <sup>®</sup> Cloud 400 R	MATOS <sup>®</sup> Cloud 493 R	MATOS <sup>®</sup> Cloud 625 R	MATOS <sup>®</sup> Cloud 1365 R	MATOS <sup>®</sup> Cloud 1460 R
Yes	Yes	Yes	Yes	Yes
12V sealed lead acid (x2 6V 3.5Ah)	12V sealed lead acid (x2 6V 3.5Ah)	12V sealed lead acid (x2 6V 3.5Ah)	12V sealed lead acid (x2 6V 3.5Ah)	12V sealed lead acid (x2 6V 3.5Ah)
RJ45 ethernet	RJ45 ethernet	RJ45 ethernet	RJ45 ethernet	RJ45 ethernet

MATOS<sup>®</sup> PLUS Refrigerators are also available in Tropical variants. The Standard versions are tested to run in ambient temperatures of 10°C to 28°C. The Tropical versions are tested to run in ambient temperatures of 10°C to 38°C.



# matos<sup>®</sup> PLUS Freezers

The MATOS<sup>®</sup> PLUS Freezer series can provide long-term storage of samples and biological material for research; and storage of easily decomposing material.



## Specifications

Standard features for all models	MATOS <sup>®</sup> Eco 85 F MATOS <sup>®</sup> Cloud 85 F	MATOS <sup>®</sup> Eco 125 F MATOS <sup>®</sup> Cloud 125 F	MATOS <sup>®</sup> Eco 200 F MATOS <sup>®</sup> Cloud 200 F	MATOS <sup>®</sup> Eco 300 F MATOS <sup>®</sup> Cloud 300 F
Description	Under-Bench	Freestanding	Freestanding	Freestanding
Capacity	85L	125L	200L	300L
Dimensions External	610w x 650d x 880h	660w x 800d x 1190h	760 x 800d x 1380h	760w x 800d x 1730h
Dimensions Internal	420w x 400d x 590h	420w x 520d x 600h	520w x 520d x 770h	520w x 520d x 1120h
Max shelf workload	10kg	10kg	10kg	10kg
Max unit workload	30kg	50kg	65kg	80kg
Weight	60kg	90kg	120kg	185kg
Shelves fit/max	2/4	2/3	2/4	3/6
Door	Solid	Solid	Solid	Solid
Door Style	Hinged	Hinged	Hinged	Hinged
Door Open Alarm	Yes	Yes	Yes	Yes
Lock	Yes	Yes	Yes	Yes
Air Convection	Natural	Natural	Natural	Natural
Controller	Microprocessor with LCD graphic display	Microprocessor with LCD graphic display	Microprocessor with LCD graphic display	Microprocessor with LCD graphic display
Interior	Stainless Steel	Stainless Steel	Stainless Steel	Stainless Steel
Housing	Powder coated steel (s/steel optional)	Powder coated steel (s/steel optional)	Powder coated steel (s/steel optional)	Powder coated steel (s/steel optional)
Colour	White/Grey	Grey	Grey	Grey
Temperature Range	-25°C to 0°C	-35°C to 0°C	-40°C to 0°C	-40°C to 0°C
Temperature Accuracy	1°C	1°C	1°C	1°C
Temperature Resolution	0.1°C	0.1°C	0.1°C	0.1°C
Power (W)	200W	450W	470W	470W
Access Port	Yes	Yes	Yes	Yes
Refrigerant Type	R455	R290	R290	R290
<b>Additional features for Cloud models</b>	<b>MATOS<sup>®</sup> Cloud 85 F</b>	<b>MATOS<sup>®</sup> Cloud 125 F</b>	<b>MATOS<sup>®</sup> Cloud 200 F</b>	<b>MATOS<sup>®</sup> Cloud 300 F</b>
Web monitoring	Yes	Yes	Yes	Yes
DAQ Backup Battery (x2)	12V sealed lead acid (x2 6V 3.5ah)	12V sealed lead acid (x2 6V 3.5ah)	12V sealed lead acid (x2 6V 3.5ah)	12V sealed lead acid (x2 6V 3.5ah)
LAN connection	RJ45 ethernet	RJ45 ethernet	RJ45 ethernet	RJ45 ethernet

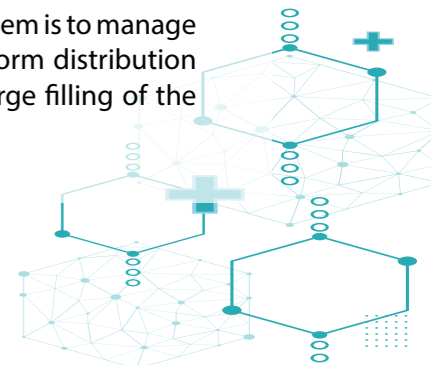
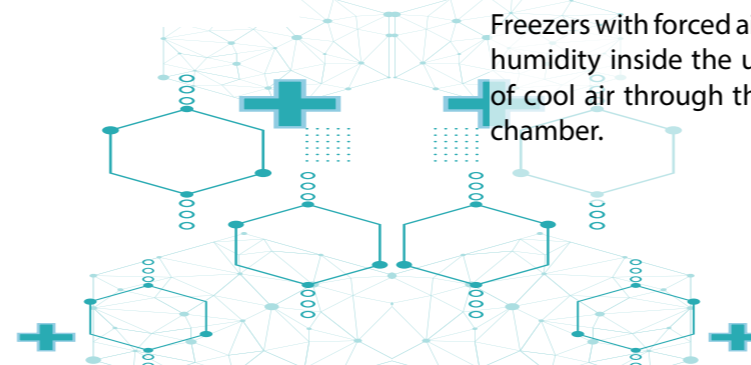
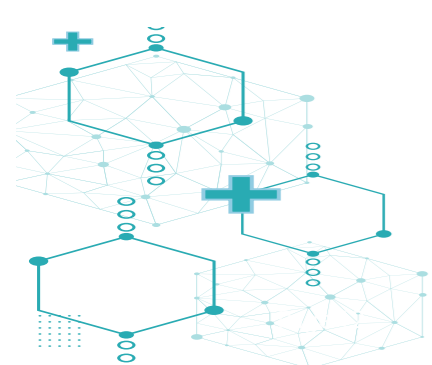
The MATOS<sup>®</sup> PLUS Freezer range now includes fan forced and ultra-cold models



## Specifications

Standard features for all models	MATOS <sup>®</sup> Eco 200 FF MATOS <sup>®</sup> Cloud 200 FF	MATOS <sup>®</sup> Eco 300 FF MATOS <sup>®</sup> Cloud 300 FF	MATOS <sup>®</sup> Eco 200 UF MATOS <sup>®</sup> Cloud 200 UF	MATOS <sup>®</sup> Eco 300 UF MATOS <sup>®</sup> Cloud 300 UF
Description	Freestanding, Fan Forced	Freestanding, Fan Forced	Freestanding, Ultra Cold	Freestanding, Ultra Cold
Capacity	200L	300L	200L	300L
Dimensions External	760 x 800d x 1380h	760w x 800d x 1730h	850 x 950d x 1620h	850w x 950d x 1910h
Dimensions Internal	520w x 520d x 770h	520w x 520d x 1120h	520w x 550d x 830h	520w x 550d x 1140h
Max shelf workload	-	-	10kg	10kg
Max unit workload	160kg	160kg	65kg	80kg
Weight	120kg	185kg	180kg	200kg
Shelves fit/max	2/4	3/6	3 Chambers	4 Chambers
Door	Solid	Solid	Solid	Solid
Door Style	Hinged	Hinged	Hinged	Hinged
Door Open Alarm	Yes	Yes	Yes	Yes
Lock	Yes	Yes	Yes	Yes
Air Convection	Fan Forced	Fan Forced	Natural	Natural
Controller	Microprocessor with LCD graphic display	Microprocessor with LCD graphic display	Microprocessor with LCD graphic display	Microprocessor with LCD graphic display
Interior	Stainless Steel	Stainless Steel	Stainless Steel	Stainless Steel
Housing	Powder coated steel (s/steel optional)	Powder coated steel (s/steel optional)	Powder coated steel (s/steel optional)	Powder coated steel (s/steel optional)
Colour	Grey	Grey	Grey	Grey
Temperature Range	-40°C to 0°C	-40°C to 0°C	-86°C to -40°C	-86°C to -40°C
Temperature Accuracy	1°C	1°C	1°C	1°C
Temperature Resolution	0.1°C	0.1°C	0.1°C	0.1°C
Power (W)	500W	500W	670W	670W
Access Port	Yes	Yes	Yes	Yes
Refrigerant Type	R290	R290	R290	R290
<b>Additional features for Cloud models</b>	<b>MATOS<sup>®</sup> Cloud 200 FF</b>	<b>MATOS<sup>®</sup> Cloud 300 FF</b>	<b>MATOS<sup>®</sup> Cloud 200 UF</b>	<b>MATOS<sup>®</sup> Cloud 300 UF</b>
Web monitoring	Yes	Yes	Yes	Yes
DAQ Backup Battery (x2)	12v sealed lead acid (12v 3.5ah)	12v sealed lead acid (12v 3.5ah)	12v sealed lead acid (12v 3.5ah)	12v sealed lead acid (12v 3.5ah)
LAN connection	RJ45 ethernet	RJ45 ethernet	RJ45 ethernet	RJ45 ethernet

Freezers with forced air convection are “no frost” freezers. The basic principle of such system is to manage humidity inside the unit and prevent frost formation on the walls. Advantages: Uniform distribution of cool air through the chamber; Faster achieving of set temperature even with a large filling of the chamber.



# matos® Thermostatic Chambers

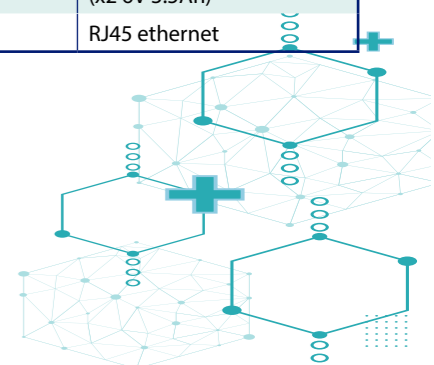
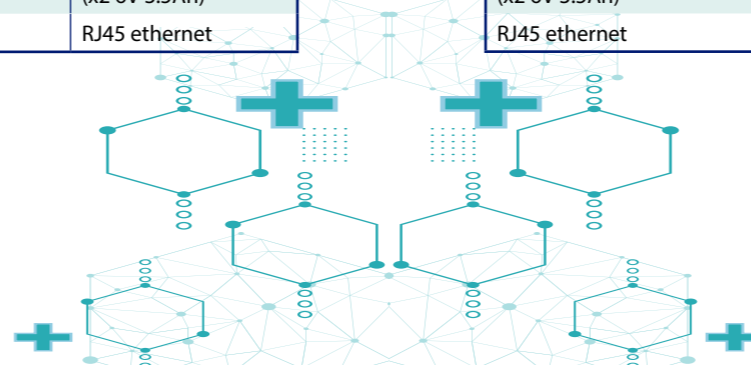
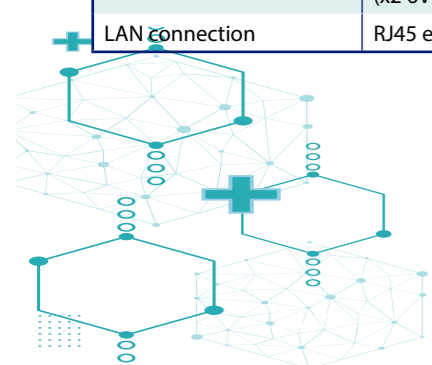
MATOS® Thermostatic Chambers are equipped with both heating and cooling systems to hold a stable temperature range regardless of ambient conditions.



## Specifications

Standard features for all models	MATOS® Eco 68 R MATOS® Cloud 68 S	MATOS® Eco 150 S MATOS® Cloud 150 S	MATOS® Eco 200 S MATOS® Cloud 200 S	MATOS® Eco 250 S MATOS® Cloud 250 S	MATOS® Eco 300 S MATOS® Cloud 300 S
Description	On/Under-Bench	On/Under-Bench	Freestanding	Freestanding	Freestanding
Gross Capacity	68L	150L	200L	250L	300L
Dimensions External	570w x 830d x 600h	620w x 800d x 860h	620w x 800d x 1060h	620w x 800d x 1260h	620w x 800d x 1460h
Dimensions Internal	470w x 300d x 430h	520w x 420d x 660h	520w x 420d x 860h	520w x 420d x 1060h	520w x 420d x 1260h
Max shelf workload	10kg	10kg	10kg	10kg	10kg
Max unit workload	20kg	30kg	40kg	50kg	60kg
Door	Solid/Glass option	Solid/Glass option	Solid/Glass option	Solid/Glass option	Solid/Glass option
Weight	32kg	54kg	59kg	69kg	75kg
Shelves fit/max	2/2	3/4	3/4	4/6	5/7
Gas defrost	Optional	Optional	Optional	Optional	Optional
Door Style	Hinged	Hinged	Hinged	Hinged	Hinged
Door Open Sensor	Yes	Yes	Yes	Yes	Yes
Door Open Alarm	Yes	Yes	Yes	Yes	Yes
Lock	Yes	Yes	Yes	Yes	Yes
Castors	Optional	Optional	Optional	Yes	Yes
Air convection	Fan Forced Air	Fan Forced Air	Fan Forced Air	Fan Forced Air	Fan Forced Air
Controller	Microprocessor with LCD graphic display	Microprocessor with LCD graphic display	Microprocessor with LCD graphic display	Microprocessor with LCD graphic display	Microprocessor with LCD graphic display
Interior	Aluminium (s/steel optional)	Aluminium (s/steel optional)	Aluminium (s/steel optional)	Aluminium (s/steel optional)	Aluminium (s/steel optional)
Housing	Powder coated steel (s/steel optional)	Powder coated steel (s/steel optional)	Powder coated steel (s/steel optional)	Powder coated steel (s/steel optional)	Powder coated steel (s/steel optional)
Colour	White/Teal	White/Teal	White/Teal	White/Teal	White/Teal
Temperature Range	+3°C to +40°C	+3°C to +40°C	+3°C to +40°C	+3°C to +40°C	+3°C to +40°C
Temperature Resolution	0.1°C	0.1°C	0.1°C	0.1°C	0.1°C
Temperature Fluctuation	+/- 0.2°C	+/- 0.2°C	+/- 0.3°C	+/- 0.3°C	+/- 0.3°C
Power	160W	170W	170W	330W	330W
Access Port	Yes	Yes	Yes	Yes	Yes
Refrigerant Type	R1234	R1234	R1234	R1234	R1234
Additional features for Cloud models	MATOS® Cloud 68 S	MATOS® Cloud 150 S	MATOS® Cloud 200 S	MATOS® Cloud 250 S	MATOS® Cloud 300 S
Web monitoring	Yes	Yes	Yes	Yes	Yes
DAQ Backup Battery (x2)	12V sealed lead acid (x2 6V 3.5Ah)	12V sealed lead acid (x2 6V 3.5Ah)	12V sealed lead acid (x2 6V 3.5Ah)	12V sealed lead acid (x2 6V 3.5Ah)	12V sealed lead acid (x2 6V 3.5Ah)
LAN connection	RJ45 ethernet	RJ45 ethernet	RJ45 ethernet	RJ45 ethernet	RJ45 ethernet

MATOS® Eco 400 S MATOS® Cloud 400 S	MATOS® Eco 493 S MATOS® Cloud 493 S	MATOS® Eco 625 S MATOS® Cloud 625 S	MATOS® Eco 1365 S MATOS® Cloud 1365 S	MATOS® Eco 1460 S MATOS® Cloud 1460 S
Freestanding	Freestanding	Freestanding	Freestanding	Freestanding
400L	493L	625L	1365L	1460L
620w x 800d x 1860h	660w x 810d x 1990h	750w x 860d x 1990h	1480w x 860d x 1990h	1450w x 950d x 1970h
520w x 420d x 1660h	510w x 640d x 1510h	600w x 690d x 1510h	1310w x 690d x 1510h	1340w x 750d x 1460h
10kg	20kg	30kg	30kg	30kg
70kg	100kg	100kg	100kg	100kg
Solid/Glass option	Solid/Glass option	Solid/Glass option	Solid/Glass option	Solid/Glass option
90kg	105kg	115kg	185kg	200kg
6/10	6/11	6/11	2x6/11	2x6/11
Optional	Optional	Optional	Optional	Optional
Hinged	Hinged	Hinged	Hinged	Hinged
Yes	Yes	Yes	Yes	Yes
Yes	Yes	Yes	Yes	Yes
Yes	Yes	Yes	Yes	Yes
Yes	Yes	Yes	Yes	Yes
Fan Forced Air	Fan Forced Air	Fan Forced Air	Fan Forced Air	Fan Forced Air
Microprocessor with LCD graphic display	Microprocessor with LCD graphic display	Microprocessor with LCD graphic display	Microprocessor with LCD graphic display	Microprocessor with LCD graphic display
Aluminium (s/steel optional)	Aluminium (s/steel optional)	Aluminium (s/steel optional)	Aluminium (s/steel optional)	Aluminium (s/steel optional)
Powder coated steel (s/steel optional)	Powder coated steel (s/steel optional)	Powder coated steel (s/steel optional)	Powder coated steel (s/steel optional)	Powder coated steel (s/steel optional)
White/Teal	White	White	White	White
+3°C to +40°C	+3°C to +40°C	+3°C to +40°C	+3°C to +40°C	+3°C to +40°C
0.1°C	0.1°C	0.1°C	0.1°C	0.1°C
+/- 0.3°C	+/- 0.3°C	+/- 0.3°C	+/- 0.3°C	+/- 0.3°C
330W	400W	400W	550W	550W
Yes	Yes	Yes	Yes	Yes
R1234	R290	R290	R290	R290
MATOS® Cloud 400 S	MATOS® Cloud 493 S	MATOS® Cloud 625 S	MATOS® Cloud 1365 S	MATOS® Cloud 1460 S
Yes	Yes	Yes	Yes	Yes
12V sealed lead acid (x2 6V 3.5Ah)	12V sealed lead acid (x2 6V 3.5Ah)	12V sealed lead acid (x2 6V 3.5Ah)	12V sealed lead acid (x2 6V 3.5Ah)	12V sealed lead acid (x2 6V 3.5Ah)
RJ45 ethernet	RJ45 ethernet	RJ45 ethernet	RJ45 ethernet	RJ45 ethernet







# ECO SERIES



The Matos® ARIA Cloud and Eco series are a new range of cost-effective European-built Medical and Vaccination Refrigerators featuring the latest technology in controllers and compressors for accurate temperature stability.

### Key Features include:

- Fast cool down
  - Featuring the Carel soft touch controller - with min/max readings at the touch of a button
  - Automatic defrost
  - Unique fan control for better temperature maintenance
  - Auxiliary Alarm Contacts as standard
  - Door lock as standard
  - Internal LED light
  - Glass door option available on all models
  - Temperature and door open alarms
  - Available in Cloud or Eco versions
- plus...

### Extended Warranty

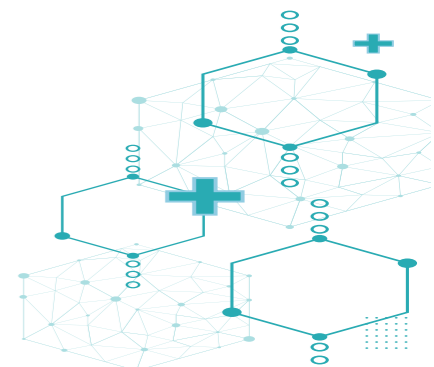
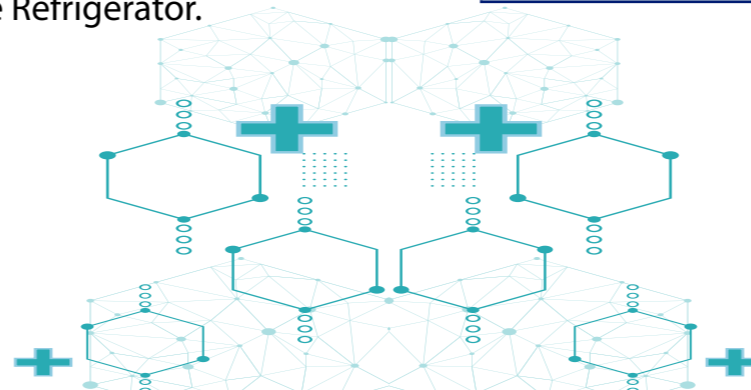
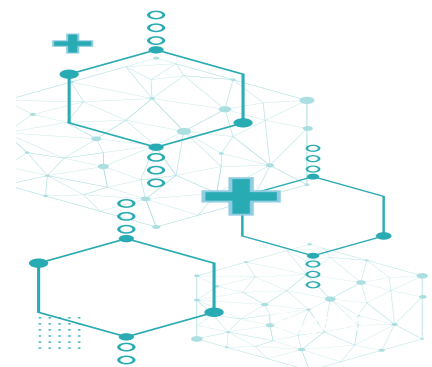
Standard 12 month warranty however an extended warranty option is available subject to Terms and Conditions

Available as an Eco or Cloud version

\*Cloud unit has the MATOS Monitoring solution in-built into the Refrigerator.

### Specifications

Standard features for all models	MATOS® ARIA Eco 150 R	MATOS® ARIA Eco 220 R MATOS® ARIA Cloud 220 R	MATOS® ARIA Eco 300 R MATOS® ARIA Cloud 300 R	MATOS® ARIA Eco 374 R MATOS® ARIA Cloud 374 R
Description	On/Under-Bench	Freestanding	Freestanding	Freestanding
Gross Capacity	150L	227L	290L	372L
Dimensions External	595w x 680d x 840h	597w x 645d x 1370h	597w x 645d x 1700h	597w x 645d x 1896h
Dimensions Internal	505w x 475d x 690h	505w x 462d x 1025h	505w x 462d x 1355h	505w x 462d x 1555h
Door	Solid/Glass option	Solid/Glass option	Solid/Glass option	Solid/Glass option
Weight	Solid 48 kg / Glass 54kg	Solid 58kg / Glass 65kg	Solid 65kg / Glass 74kg	Solid 70kg / Glass 80kg
Shelves fit/max	3	5/6	6/7	6/8
Door Style	Hinged	Hinged	Hinged	Hinged
Door Open Sensor	Yes	Yes	Yes	Yes
Door Open Alarm	Yes	Yes	Yes	Yes
Lock	Yes	Yes	Yes	Yes
Castors	2 wheels rear, 2 adjustable feet	2 wheels rear, 2 adjustable feet or castors for new models	2 wheels rear, 2 adjustable feet or castors for new models	2 wheels rear, 2 adjustable feet or castors for new models
Air convection	Fan Forced Air	Fan Forced Air	Fan Forced Air	Fan Forced Air
Controller	Microprocessor with external LCD graphic display	Microprocessor with external LCD graphic display	Microprocessor with external LCD graphic display	Microprocessor with external LCD graphic display
Interior	HIPS (High Impact Polystyrene)	HIPS (High Impact Polystyrene)	HIPS (High Impact Polystyrene)	HIPS (High Impact Polystyrene)
Housing	Powder coated steel	Powder coated steel	Powder coated steel	Powder coated steel
Colour	White/Teal	White/Teal	White/Teal	White/Teal
Temperature Range	2°C to +8°C	1°C to +10°C	1°C to +10°C	1°C to +10°C
Temperature Resolution	0.1°C	0.1°C	0.1°C	0.1°C
Temperature Fluctuation	+/- 0.5°C	+/- 0.5°C	+/- 0.5°C	+/- 0.5°C
Power	Solid 1.32 kW Glass 1.4kW 24 hours	Solid 270W Glass 350W 24 hours	Solid 290W Glass 360W 24 hours	Solid 430W Glass 480W 24 hours
Auxiliary External Contact	Yes	Yes	Yes	Yes
Refrigerant Type	R600A	R134A / R600A	R134A / R600A	R134A / R600A
<b>Additional features for Cloud models</b>		MATOS® ARIA Cloud 220 R	MATOS® ARIA Cloud 300 R	MATOS® ARIA Cloud 374 R
Web monitoring		Yes	Yes	Yes
DAQ Backup Battery (x2)		12V sealed lead acid (x2 6V 3.5Ah)	12V sealed lead acid (x2 6V 3.5Ah)	12V sealed lead acid (x2 6V 3.5Ah)
LAN connection		RJ45 ethernet	RJ45 ethernet	RJ45 ethernet





# EXCEL SERIES



The Matos® EXCEL Range provides modernised British designed Medical and Vaccination Refrigerators to the Australasian market. A range offering a High Quality finish with a sleek design, easy to use controller and efficient cooling ability to handle our Tropical climate.

### Key Features include:

- Efficient cool down
  - Featuring a Simple Read, Record, Rest Controller for Min/Max temperature data with the touch of one button
  - Automatic defrost
  - Auxiliary Alarm Contacts as standard
  - Door lock as standard
  - Internal LED light
  - Glass door / Solid Door models available
  - Port Hole feature is standard on all models
  - Temperature and door open alarms
- plus...

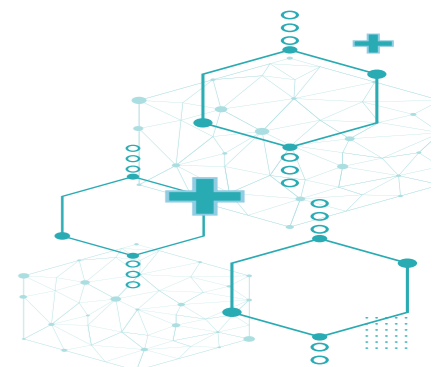
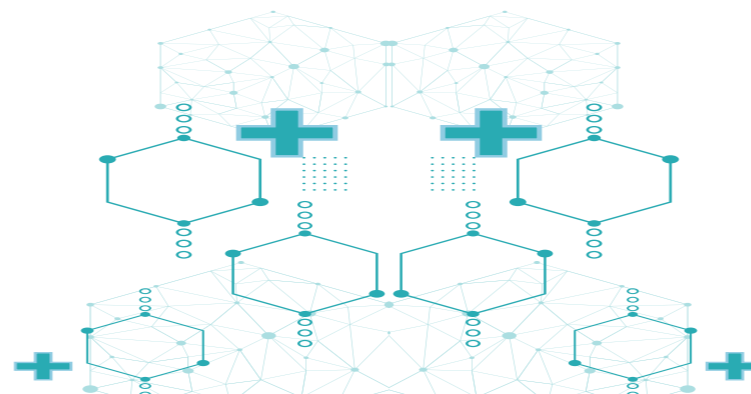
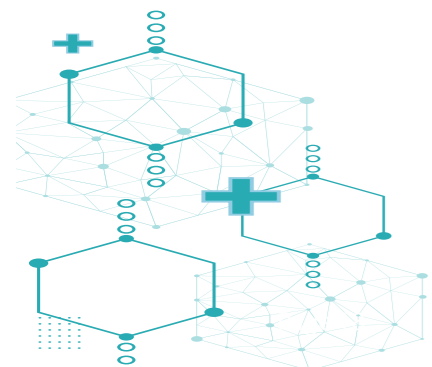
### Extended Warranty

Standard 12 month warranty however an extended warranty option is available subject to Terms and Conditions

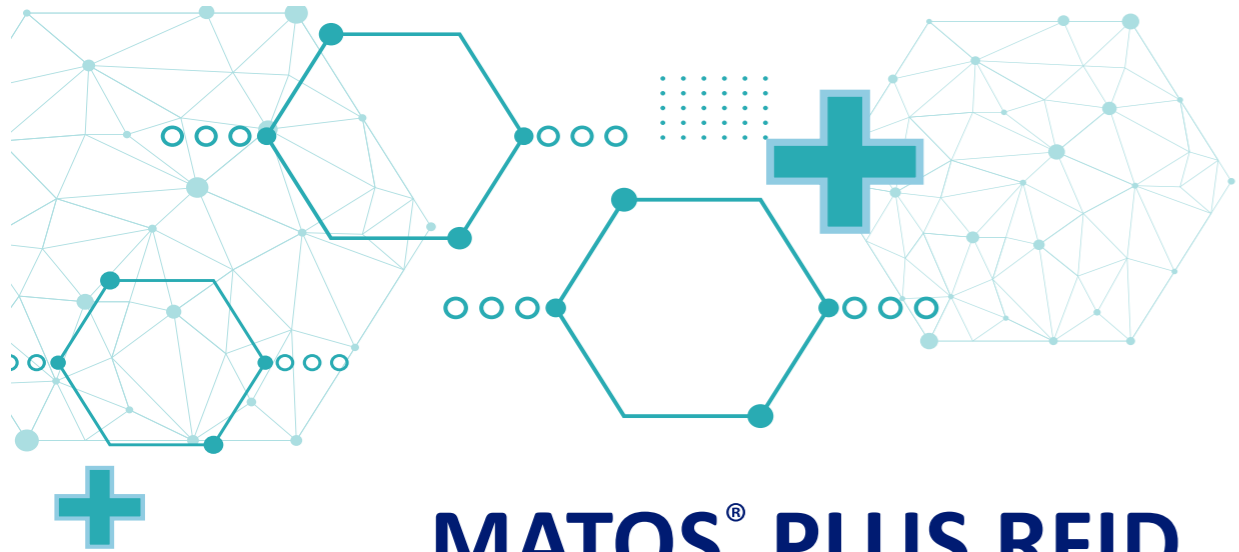


### Specifications

Standard features	MES145 / MEG145	MES300 / MEG300	MES400 / MES400	MES500 / MEG500
Description	Under-Bench	Freestanding	Freestanding	Freestanding Double Door
Gross Capacity	148L	308L	408L	495L
Dimensions External	595w x 595d x 820h	595w x 650d x 1500h	595w x 695d x 1865h	1180w x 609d x 1530h
Door	Solid/Glass option	Solid/Glass option	Solid/Glass option	Solid/Glass option
Weight	38 kg	72 kg	84 kg	130 kg
Shelves fit/max	3 (2x full and 1 smaller)	5 (4 x full and 1 x smaller)	6 (5 x full and 1 x smaller)	8 (6 x full and 2 x smaller)
Door Style	Right Hand Hinge	Right Hand Hinge	Right Hand Hinge	Double Door Model
Door Open Sensor	Yes	Yes	Yes	Yes
Door Open Alarm	Yes	Yes	Yes	Yes
Lock	Yes	Yes	Yes	Yes
Feet / Castors	2 adjustable feet at front	2 adjustable feet at front and rollers at the back	2 adjustable feet at front and rollers at the back	4 x lockable castors
Air convection	Fan Forced Air	Fan Forced Air	Fan Forced Air	Fan Forced Air
Controller	Digital, External, Min/Max	Digital, External, Min/Max	Digital, External, Min/Max	Digital, External, Min/Max
Interior	HIPS (High Impact Polystyrene)	HIPS (High Impact Polystyrene)	HIPS (High Impact Polystyrene)	HIPS (High Impact Polystyrene)
Housing	Powder coated sheet	Powder coated steel	Powder coated steel	Powder coated steel
Colour	White/Green	White/Green	White/Green	White/Green
Temperature Range	2°C to +8°C	2°C to +8°C	2°C to +8°C	2°C to +8°C
Voltage 50Hz	220-240V	220-240V	220-240V	220-240V
Access Port	Yes - Rear Middle	Yes - Rear Middle	Yes - Rear Middle	Yes - Rear Middle
Power	0.9 kWh	2.2 kWh	2.6 kWh	3.9 kWh
Input Power	76W	220W	240W	380W
Noise Level (db)	<50db	<50db	50db	50db
Refrigerant Type	R600A	R600A	R600A	R600A







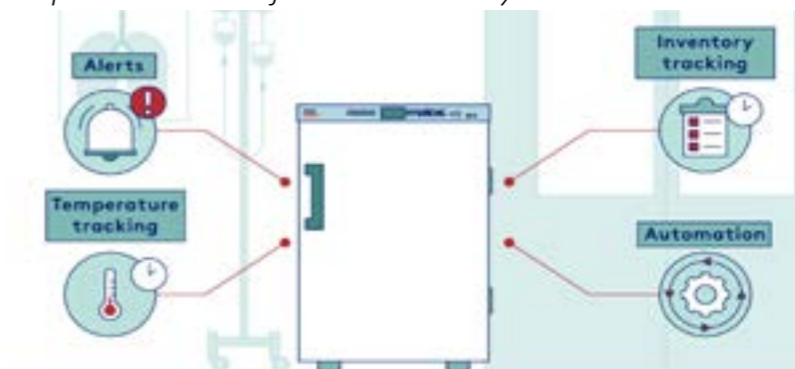
# MATOS® PLUS RFID PHARMACEUTICAL REFRIGERATORS



# MATOS® PLUS RFID REFRIGERATOR RANGE

Rollex Medical proudly introduces our new exclusive MATOS® Real Time Inventory and Temperature Monitoring RFID Cloud Refrigerator Range.

The MATOS® Cloud RFID system is an Inventory management solution, installed within the tested & proven MATOS® Cloud Pharmaceutical Refrigerators. It utilises the MATOS® Monitoring Cloud Platform to provide live inventory status information; detailing exactly what products are located in a fridge cabinet, product expiry information and re-order levels at all times. Each Refrigerator is linked directly to the comprehensive MATOS® Monitoring Real Time Temperature monitoring platform, ensuring that all critical temperature and product status information is always available.



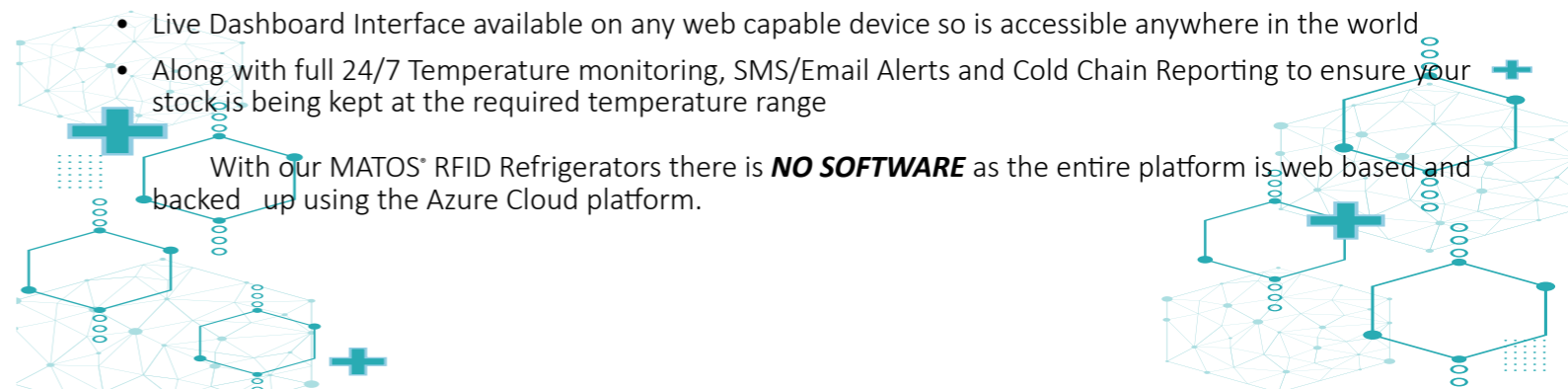
MATOS® RFID Refrigerators are available in a range of models from an Under Bench 150L to a Freestanding 625L Refrigerator. Available for use in any Hospital, Pharmacy, Clinical Laboratory or local Doctor Surgery our MATOS Refrigeration range is manufactured in Europe with only the latest technology in Refrigeration being utilised to ensure you can have confidence in the asset you are purchasing.

**The MATOS RFID Pharmaceutical Refrigeration range is your fully automated, in-built solution for all your Inventory and Temperature Monitoring requirements.**

### Benefits of the RFID Pharmaceutical Refrigerator:

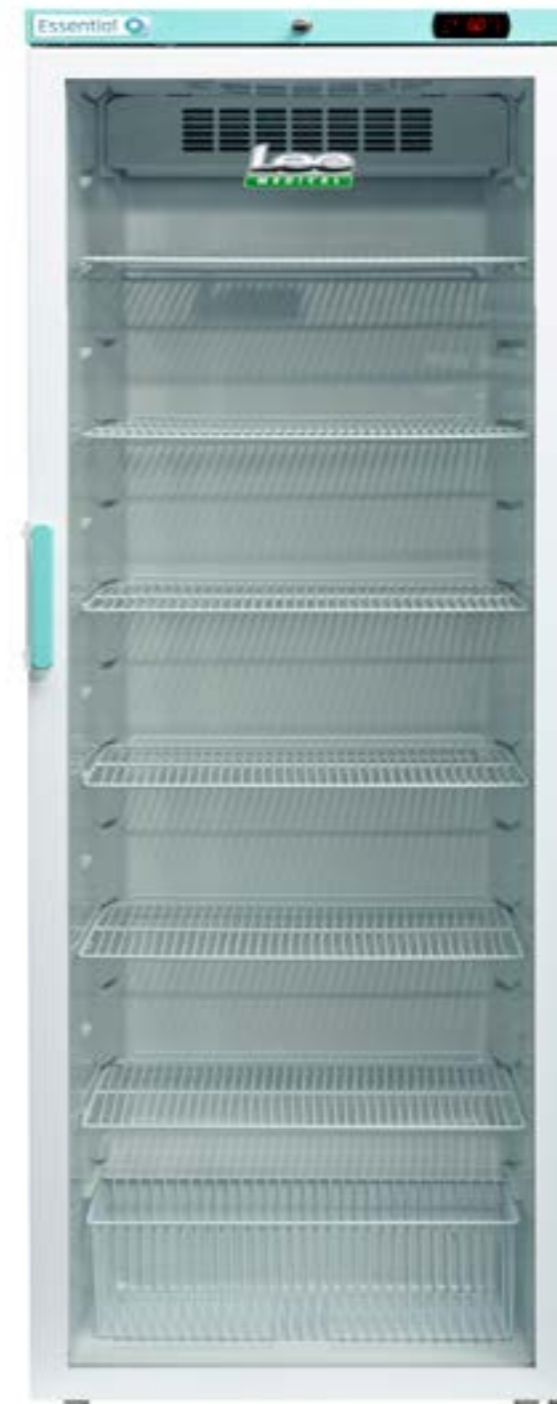
- Monitor stock levels 24/7
- Monitor stock rotation- reducing wastage
- Be provided with data to assist with forecasting
- Daily, Weekly, Monthly Automatic Inventory / Temperature Reporting
- Reduces Human Interaction with the removal of manual stocktakes and downloading temperature dataloggers
- Product recalls are easily managed
- Ensure stock is legitimate and untampered from the point of manufacture
- Robust audit history with Data Management / Protection (conforms to FDA CFR Chapter 21, pt. 11 regulations)
- Receive Alerts when stock is running low and about to expire
- Live Dashboard Interface available on any web capable device so is accessible anywhere in the world
- Along with full 24/7 Temperature monitoring, SMS/Email Alerts and Cold Chain Reporting to ensure your stock is being kept at the required temperature range

With our MATOS® RFID Refrigerators there is **NO SOFTWARE** as the entire platform is web based and backed up using the Azure Cloud platform.





## SECTION 2 LEC MEDICAL



We have developed our range of Pharmacy and Laboratory refrigerators and freezers with reliability and ease of use in mind.

Our Pharmacy range conforms to the guidance set out by the Pharmacy Guild of Australia and maintains an internal temperature of between +2°C and +8°C. Our Laboratory fridges operate at a temperature of +2°C to +10°C and our freezers operate at -18°C and below.

We have also added a number of improvements to most popular models to ensure we are offering you the best possible secure and reliable refrigerated storage.

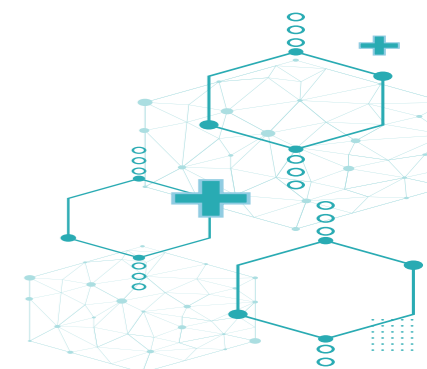
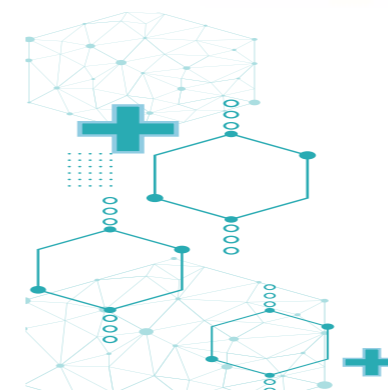
---

### New Generation Refrigeration

---

Fridge & Freezer product line features:

- Energy efficient refrigerant
- Latest Carel Controller technology
- Anti-microbial handle
- Ready to use
- Forced air cooling
- Storage flexibility
- Fitted rollers and adjustable feet
- Lock fitted as standard







# Pharmacy Range



## Specifications

Standard features for all models	PESR82 / PEGR82	PESR158 / PEGR158	PESR310 / PEGR310	PESR400 / PEGR400
Description	On/Under-Bench	Under-Bench/ Freestanding	Freestanding	Freestanding
Gross Capacity	82L	158L	310L	394L
Dimensions External	495w x 515d x 655h	595w x 642d x 850h	595w x 600d x 1560h	595w x 600d x 1925h
Dimensions Internal	419w x 315d x 540h	500w x 450d x 725h	500w x 480d x 1445h	500w x 480d x 1775h
Door	Solid/Glass option	Solid/Glass option	Solid/Glass option	Solid/Glass option
Weight	Solid 27.5kg / Glass 27.5kg	Solid 37kg / Glass 36.25kg	Solid 50.22kg / Glass 63.61kg	Solid 71.2kg / Glass 72.2kg
Shelves fit	2	3	5	7
No. of Baskets (wire)	1	1	1	1
Door Style	Right Hand Hinge (Reversible)	Right Hand Hinge (Reversible)	Right Hand Hinge (Reversible)	Right Hand Hinge (Reversible)
Door Open Sensor	Yes	Yes	Yes	Yes
Door Open Alarm	Yes	Yes	Yes	Yes
Lock	Yes	Yes	Yes	Yes
Adjustable Feet	No	4 adjustable feet	4 adjustable feet	4 adjustable feet
Air convection	Fan Forced Air	Fan Forced Air	Fan Forced Air	Fan Forced Air
Controller	Digital, External	Digital, External	Digital, External	Digital, External
Interior	HIPS (High Impact Polystyrene)	HIPS (High Impact Polystyrene)	HIPS (High Impact Polystyrene)	HIPS (High Impact Polystyrene)
Housing	Powder coated sheet	Powder coated sheet	Powder coated sheet	Powder coated sheet
Colour	White/Green	White/Green	White/Green	White/Green
Temperature Range	2°C to +8°C	2°C to +8°C	2°C to +8°C	2°C to +8°C
Noise Level	<43db	Solid <43dB / Glass <44dB	39.9dB	40.3dB
Access Port	No	No	Yes, Rear Bottom Right (16mm)	Yes, Rear Bottom Right (16mm)
Energy Consumption	1.58kW/24	1.24kW/24h	1.37kWh/24h	1.17kWh/24h
Auxiliary External Contact	Yes	Yes	Yes	Yes
Refrigerant Type	R600A	R600A	R600A / 34g	R600A / 38g
Defrost	Auto	Auto	Auto	Auto
Voltage 50/60Hz	230V	220-240V	230V - 50Hz	230V - 50Hz
Internal light/Type	Solid No/Glass Yes	Yes/LED	Yes/LED	Yes/LED



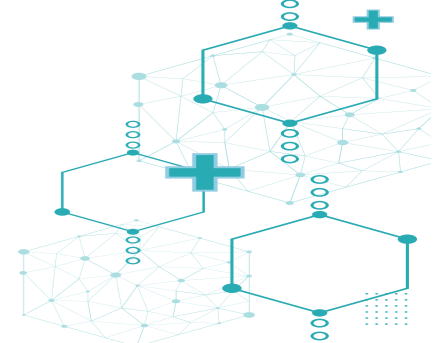
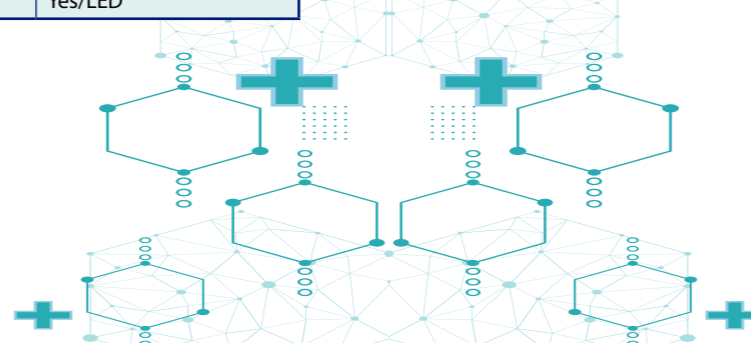
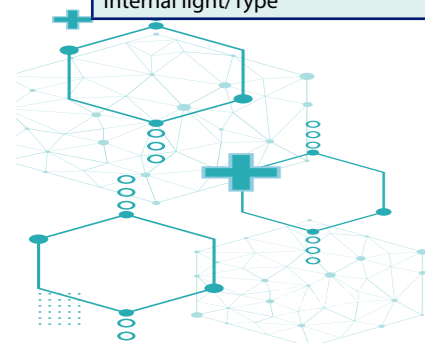
# Laboratory Freezer Range

We offer a wide range of freezers to suit your needs, from small counter-top units ideal for when space is limited, to freestanding units for when extra storage capacity is required.



## Specifications

Model	LSFSF39	LSFSF98	LSFSF310
Description	Under/On-Bench	Under-Bench	Freestanding
Capacity	39L	98L	312L
Dimensions External	480w x 505d x 565h	595w x 660d x 850h	595w x 600d x 1925h
Dimensions Internal	360w x 340d x 395h	420w x 430d x 640h	420w x 455d x 1710h
Weight	18kg	37.25kg	75.4kg
Door	Solid	Solid	Solid
Door Style	Right Hand Hinge (Reversible)	Right Hand Hinge (Reversible)	Right Hand Hinge
Door Open Alarm	Yes	Yes	Yes
Shelves/Draws/Sections	1 shelf	3 drawers	8 (7 + 1 Half section)
Shelf/Section Material	Wire	Plastic	HIPS Shelf with flap to open
Wire Basket	No	No	No
Lock	Yes	Yes	Yes
Feet/Adjustable (& Position)	4 Feet, 1 adjustable front foot	4 adjustable feet	2 adjustable front feet
Rollers	No	No	Yes, 2 rear
Controller Type	Digital, External	Digital, External	Digital, External
Interior	High Impact Polystyrene Interior	High Impact Polystyrene Interior	High Impact Polystyrene Interior
Housing	Powder coated sheet	Powder coated sheet	Powder coated sheet
Colour	White/Green	White/Green	White/Green
Temperature Range	-18°C to -20°C	-18°C to -20°C	-18°C to -20°C
Defrost	Manual	Manual	Manual
Internal Light	No	No	No
Insulation Type	Cyclopentane	Cyclopentane	Cyclopentane
Insulation Thickness	35mm ???	35mm	85mm
Anti-Microbial Handle	Yes	Yes	Yes
Voltage Supply	220-240V / 50Hz	Voltage 50/60Hz/ 230V	Voltage 50/60Hz / 230V - 50Hz
Refrigerant Type	R600A	R600A	R600A / 80g





# Laboratory Fridge Range

We provide safe, reliable and energy efficient temperature controlled storage to laboratories. All our Laboratory fridges and freezers are SPARK FREE, allowing you to store combustible products safely.

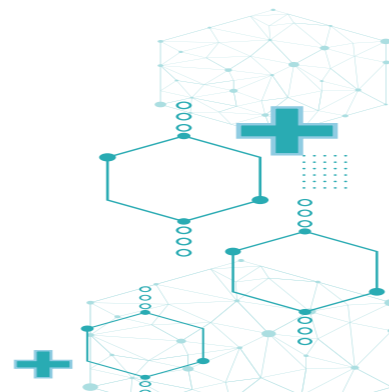
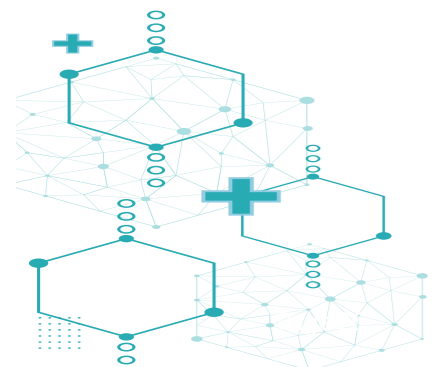


## Specifications

Model	LSFSR107	LSFSR158	LSFSR310
Description	Under/On-Bench	Under-Bench	Freestanding
Capacity	107L	158L	310L
Dimensions External	495w x 620d x 830h	595w x 600d x 850h	595w x 600d x 1560h
Dimensions Internal	403w x 440d x 700h	495w x 480d x 720h	500w x 480d x 1445h
Weight	35kg	33.09kg	49.8kg
Door	Solid	Solid	Solid
Door Style	Right Hand Hinge	Right Hand Hinge	Right Hand Hinge
Door Open Alarm	Yes	Yes	Yes
Shelves Supplied/Positions	2 shelves	2 + 1 half shelf	5 (4 x 1 half shelf)
Shelf Material	Wire	Wire	Wire
Wire Basket	Yes	Yes	Yes
Lock	Yes	Yes	Yes
Feet	4 adjustable feet	4 adjustable feet	2 adjustable front feet
Controller Type	Digital, External	Digital, External	Digital, External
Interior	High Impact Polystyrene Interior	High Impact Polystyrene Interior	High Impact Polystyrene Interior
Housing	Powder coated sheet	Powder coated sheet	Powder coated sheet
Colour	White/Green	White/Green	White/Green
Temperature Range	+2°C to +10°C	+2°C to +10°C	+2°C to +10°C
Defrost	Automatic	Automatic	Automatic
Interior Light	No	No	No
Insulation Type	Cyclopentane	Cyclopentane	Cyclopentane
Anti-Microbial Handle	Yes	Yes	Yes
Voltage Supply 50/60Hz	230V	230V - 50Hz	230V - 50Hz
Refrigerant Type	R600A	R600A / 28g	R600A / 34g



## SECTION 3 ARCTIKO







The Arctiko Range offers a wide selection of standard and special equipment for Research Centres, Hospitals, Laboratories, Academia industry.



## The ARCTIKO Range

### Medical Freezers

Based in Esbjerg in Denmark, Arctiko develops and assembles medical and lab freezers and pharmaceutical refrigerators for the global and health care medical industry. This industry is vital for global health, treatment of patients and research and development of new medicine and we are proud to support it.

We offer a wide selection of ultra low temperature freezers and refrigerators. With our biomedical freezers, ultra low temperature freezers and cryogenic freezers, your samples are stored safely under a stable temperature. Additionally to our line of freezers, we also provide pharmaceutical and blood bank refrigerators.

### True Dual Technology

Our TRUE DUAL™ technology is an extra layer of security because we understand that storing samples is important and that each sample is priceless. To keep your

samples safe and to protect the hard work put into the samples, we designed the TRUE DUAL™ technology. This technology consists of two independent cooling cycles based on the single compressor system. In the unlikely event of an error or breakdown of one of the cycles, the other system will serve as backup.

### Ultra Low Freezers with Single Compressors

Storing medical samples at ultra low temperatures is thus of the utmost importance. To support this sensitive process, we give you Arctiko's single compressor system which is one of the best solutions for ultra low temperature storing. Our single compressor cooling system uses one compressor and one cooling cycle to ensure a one of a kind range of ultra low temperature freezers with reliable and remarkable temperature performance. The system requires less maintenance, has less heat dissipation, lower consumption of energy as well as noise reduction.

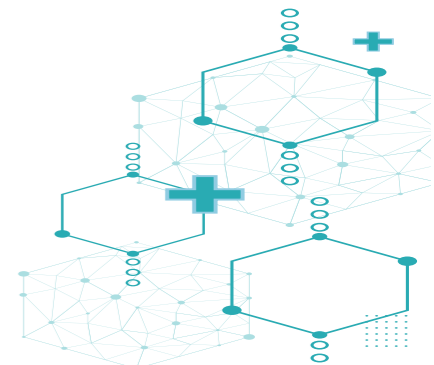
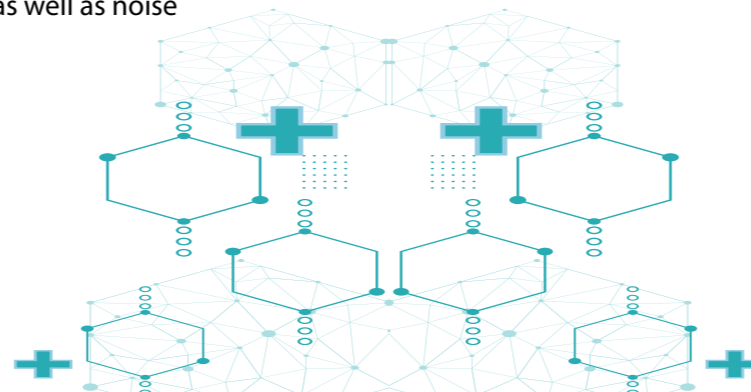


## ULUF Ultra Cold Freezers



### Specifications

Model No	ULUF 65	ULUF 125	ULUF 450-2	ULUF 750-2
Description	Ultra Cold Freezer	Ultra Cold Freezer	Ultra Cold Freezer	Ultra Cold Freezer
Capacity	54L	94L	393L	642L
Dimensions External	600w x 700d x 810h	950w x 725d x 810h	720w x 885d x 1990h	1030w x 885d x 1990h
Dimensions Internal	360w x 468d x 320h	360w x 493d x 530h	480w x 608d x 1345h	790w x 608d x 1345h
Weight	77kg	98kg	175kg	242kg
Insulation (mm)	120	120	120	120
Cooling Technology	Single System	Single System	Single System	Dual System
Power consumption	6.9 kWh/24H	7.0 kWh/24H	14.6 kWh/24H	19.5 kWh/24H
Automatic Defrost	No	No	No	No
Light	No	No	No	Yes
Door	Solid	Solid	Solid	Solid
Door Style	Hinged	Hinged	Hinged	Hinged
Door Open Sensor	Yes	Yes	Yes	Yes
Door Open Alarm	Yes	Yes	Yes	Yes
Lock	Yes	Yes	Yes	Yes
Castors	2 rollers	2 rollers	4 castors	4 castors
Controller Model / Probe	G214 / PT1000	G214 / PT1000	G214 / PT1000	G214 / PT1000
Interior	Stainless Steel	Stainless Steel	Stainless Steel	Stainless Steel
Housing	Electrogalvanized Steel	Electrogalvanized Steel	Electrogalvanized Steel	Electrogalvanized Steel
Temperature Range	-40°C to -86°C	-40°C to -86°C	-40°C to -86°C	-40°C to -86°C
Compressor Failure Alarm	Yes	Yes	Yes	Yes
Backup Alarm Battery	Yes	Yes	Yes	Yes
Power Supply	230V / 50Hz	230V / 50Hz	230V / 50Hz	230V / 50Hz
Refrigerant Type	EP88	EP88	EP88	EP88





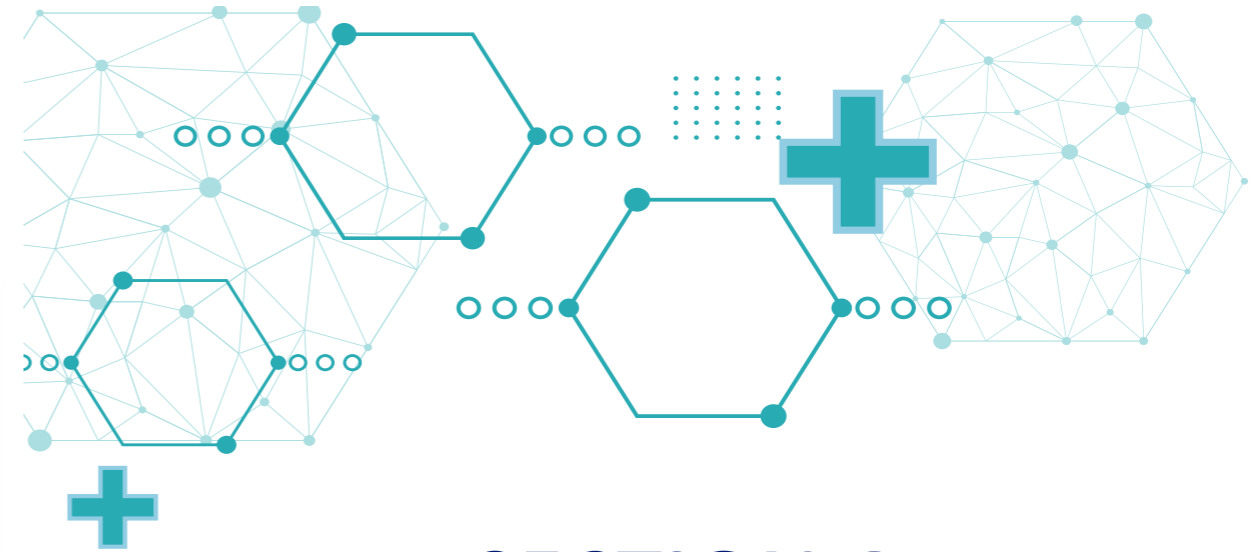
## BBR - Blood Refrigerators



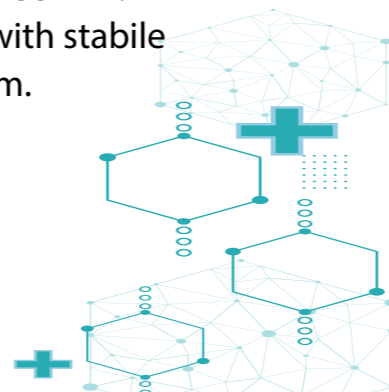
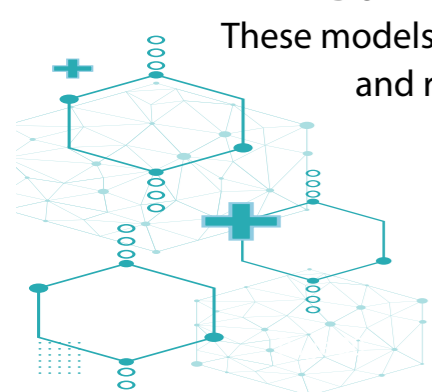
### Specifications

Model No	BBR100-D	BBR300-D	BBR700-D	BBR1400-D
Description	Blood Refrigerator	Blood Refrigerator	Blood Refrigerator	Blood Refrigerator
Capacity	94L	352L	628L	1381L
Dimensions External	610w x 659d x 790h	520w x 690d x 1997h	720w x 860d x 1997h	1440w x 860d x 1997h
Dimensions Internal	490w x 440d x 434h	400w x 585d x 1505h	600w x 695d x 1505h	1320w x 695d x 1505h
Weight	86kg	148kg	178kg	213kg
Insulation (mm)	60	60	60	60
Cooling Technology	Air Forced	Air Forced	Air Forced	Air Forced
Power consumption	4.3 kWh/24H	6.4 kWh/24H	8.5 kWh/24H	10.5 kWh/24H
Automatic Defrost	Yes	Yes	Yes	Yes
Light	Yes	Yes	Yes	Yes
Door	Glass	Glass	Glass	Glass
Door Style	Hinged	Hinged	Hinged	Hinged
Door Open Sensor	Yes	Yes	Yes	Yes
Door Open Alarm	Yes	Yes	Yes	Yes
Lock	Yes	Yes	Yes	Yes
Castors	2 rollers	4 castors	4 castors	5 castors
Controller Model / Probe	G214 / PT1000	G214 / PT1000	G214 / PT1000	G214 / PT1000
Interior	Stainless Steel	Stainless Steel	Stainless Steel	Stainless Steel
Housing	Painted Steel	Painted Steel	Painted Steel	Painted Steel
Temperature Range	+4°C	+4°C	+4°C	+4°C
Compressor Failure Alarm	Yes	Yes	Yes	Yes
Backup Alarm Battery	Yes	Yes	Yes	Yes
Power Supply	230V / 50Hz	230V / 50Hz	230V / 50Hz	230V / 50Hz
Number of Compressors	2	2	2	2
Refrigerant Type	R290	R290	R290	R290

OPTIMAL CHOICE FOR SAFE AND RELIABLE STORAGE OF BLOOD, DUE TO THE DUAL COOLING SYSTEM THAT WILL PROVIDE DOUBLE SECURITY. These models are MDD certified, TGA Approved and designed with stable and reliable temperature uniformity from top to bottom.



## SECTION 4 MONITORING SOLUTIONS





# MATOS® MONITORING SOLUTIONS

MATOS® Monitoring is a web based, automatic temperature monitoring system, enabling direct access to your fridge / freezer temperatures and records anywhere, at any time.



MATOS® Monitoring Technology can also be utilised in many other monitoring applications

Temperature | Gas or particle levels  
 Oxygen / CO2 levels | Pressure | Humidity  
 Ultra Low Temperature | Glycol



Take a look at the Monitoring demonstration site - [www.matosmonitoring.com](http://www.matosmonitoring.com) using the following:  
 Username: matosdemo1 / Password: matosdemo1

New Zealand: Patent 596323 | Australia: Patent 2012336431 | Europe: Patent 12846969.9



# MATOS® WIRELESS MONITORING KIT (MWM)

Rollex Medical proudly introduces our new exclusive Wireless Monitoring Kit (MWM) which can be retrofitted to any Refrigerator, Freezer, Cool-Room or Airspace in seconds.

This addition to the MATOS® Monitoring product range provides you with an easy to install solution with no technical expertise required while still providing you with the proven temperature monitoring system of choice using our MATOS® technology.

### How does the System Work?

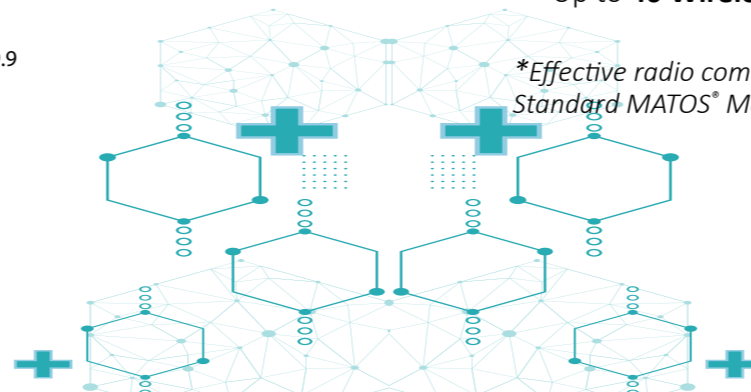
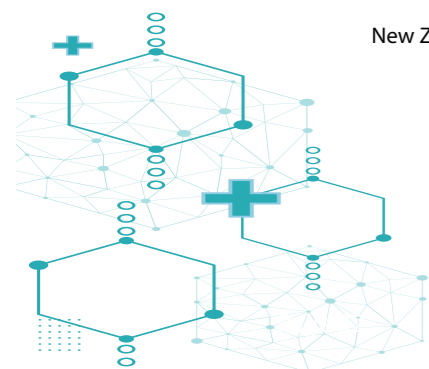
Place the sensor tile anywhere inside your Refrigerator where you wish to monitor the temperature. The Sensor transmits the data to the Base Station wirelessly. The Base Station is connected to the Internet using an Ethernet cable and will pick up all transmitted data from the tile and upload it to our MATOS® Monitoring Azure Server. You then have access to your full temperature records online, automatic reporting and SMS/ Email alerts using our MATOS® Monitoring technology.



### Providing the premium MATOS® Monitoring technology in a compact, easy to install solution:

- Fully automatic online monitoring
- Requires an internet connection
- Sensors can be mounted straight onto any surface with easy adhesive strip
- Infinitely expandable
- Instant user alerts upon temperature breach
- Replaceable battery
- 30 days internal memory
- Cloud storage integrity guaranteed for at least ten years
- NZ, Australian & FCC Compliance
- Enjoy the range of MATOS Monitoring Features without an invasive installation
- Powerful yet simple reporting system
- Compatible with any existing MATOS Monitoring System products
- Up to **40 Wireless Sensors** can be connected to a SINGLE Ethernet Base Station Receiver Unit!\*

\*Effective radio communication distance is 210m line of sight.  
 Standard MATOS® Monitoring terms and conditions apply. Extra charges may be applicable or excess sms alerts.



# Retrofit Monitoring

## matos® M-310

MATOS® Monitoring can now be retrofitted to any fridge, freezer, cool-room or airspace. This can be achieved with the use of our new MATOS® M-310 stand-alone monitoring unit. Developed and built in New Zealand, the M-310 is a robust, secure monitoring unit that is wifi and cellular compatible for all your monitoring environments.



MATOS® M-310 is a standalone monitoring unit that is quick and easy to install and provides most of the premium MATOS® Monitoring features in a compact, robust enclosure:

- Fully automatic, online monitoring – [www.matosmonitoring.com](http://www.matosmonitoring.com)
- Requires internet connection (wifi & cellular options available)
- Wall mount or benchtop monitoring unit
- Supports up to 6 digital temperature sensors/probes
- Supports 2 digital inputs (I/O) e.g. monitor power or door status
- Variable probe lengths and configurations available
- 36 hour Battery Backup with instant power switching
- 30 days internal log memory
- Cloud storage data integrity guaranteed for at least 10 years
- New Zealand and Australian compliant.

Standard MATOS® Monitoring terms and conditions apply. Extra charges may be applicable for excess sms alerts.

We also offer tailor-made options for retrofitting our complete Fridge Rescue System and Monitoring M-R01 and M-R02 units into compatible fridges and freezers.

# Remote Monitoring

## Control *by* WEB



ControlByWeb products are high-end components for remote monitoring and control applications. Our products are used to monitor and control many different types of equipment and systems in real-time from any computer using a web browser. Our products can be used as stand-alone devices in simple applications, offering a complete solution requiring no additional equipment and they can also be used as building-blocks in large systems.

### How They Work

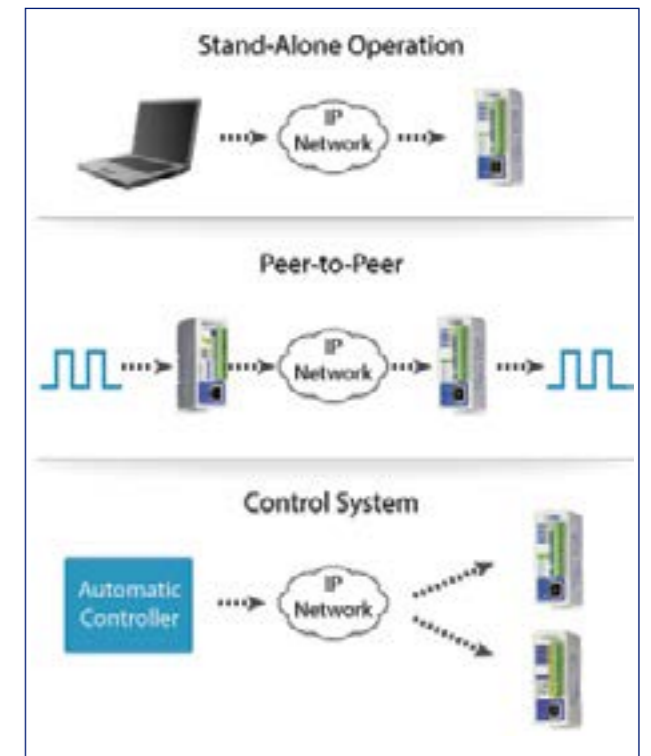
Each ControlByWeb product has a small combination of I/O (inputs & outputs) and a built-in web server. Sensors, switches, voltages, etc., can be connected to the inputs for monitoring various parameters, conditions, or events such as temperatures, voltages, or alarms. Because our products have a built-in web server, users can view input parameters and control relay outputs using a simple web page from just about any web browser. In addition, our products support multiple protocols so they can communicate directly with computers, PLCs, and automation controllers in more advanced control systems.

### Example Applications

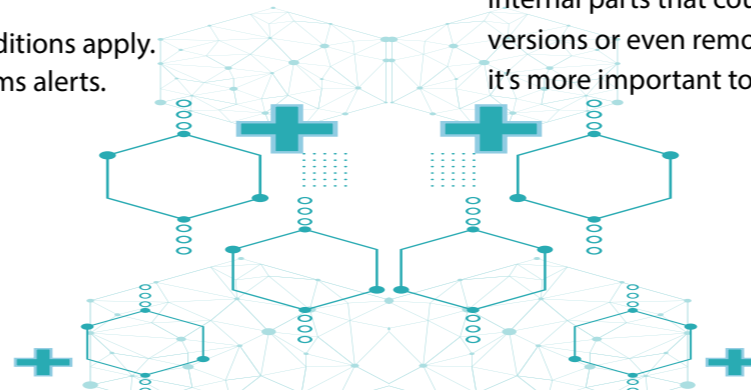
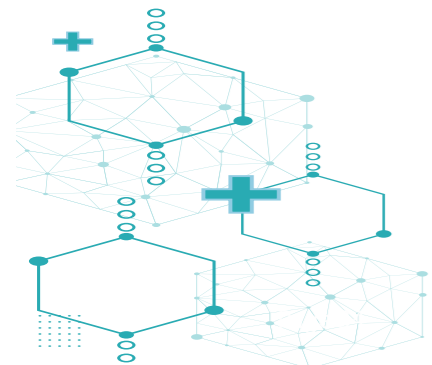
ControlByWeb products can be used to monitor temperature, humidity, power, tank levels, pressure, the status of doors, windows, production machines, and much more.

### Why ControlByWeb

ControlByWeb products are designed to be extremely robust and reliable. Although they are affordably priced, no shortcuts were taken in their design, and no compromises were made in the parts used. Some would say that our products are "over engineered" because there are many internal parts that could be replaced with less expensive versions or even removed to save money, but we believe it's more important to build them right than to build them



cheap. Our products are carefully made in the USA and each product is inspected many times at different levels of production and tested before it is shipped. Our firmware is tested both manually and automatically for long time periods to verify its integrity before it is released. These are just a





# LogTag® Data Logging System



LogTag® is a battery powered, low cost, robust data logging solution.

The Logtag® Data Logger is a “thermometer with a memory” that has been designed to record temperatures from -40°C to +65°C. It features a data logging memory which can store over 7000 temperature readings and a separate, rolling, 30 day statistical max/min reading and duration memory.

The display is designed to show ‘at a glance’ if temperature excursions have occurred for both the current reading and up to 30 days in the past. Details of any excursions can be checked directly by inspecting the statistics history on the recorder’s display or in more detail by downloading the logged data.

Logged temperature data can be downloaded and analysed to display data in chart, table or statistical formats and allows electronic archiving, export or transmission of the data in support of sophisticated data management systems.

- Transport and shipping
- Monitoring of catering equipment in cafes, fast-food outlets and restaurants
- HVAC Systems
- Medical and agricultural research
- Storage and warehousing
- Monitoring of machinery and equipment

LogTag® products are designed to meet the growing demand for cost effective electronic environmental recording solutions.

Combining state of the art technology, innovative design and high volume manufacturing techniques, the LogTag® system provides the most cost effective, high performance environmental data logging system available for today’s market.

LogTag® products are used in a huge number of different applications including widespread use in food and pharmaceutical temperature and/or humidity monitoring for both storage and shipping. Our products are also used for education and research with products holding approvals with many world recognised organisations such as the World Health Organisation.

## Applications

The LogTag’s® versatility and low-cost make it the preferred choice for many applications in these sectors.

- Cold chain management
- Medical and pharmaceutical environments
- Agricultural production

## Low cost

LogTag® data loggers are low-cost loggers that break the price barrier to continuous, extensive logging. Even large numbers of LogTags® are generally cheaper than traditional multi-channel loggers and can be easily installed and deployed.

## Visual alarm indicator

The LogTag® is the perfect choice for applications in which visual alarm notifications are crucial. A flashing LED indicates that the pre-configured temperature alarm range has been violated. It’s then advisable to perform a comprehensive analysis of the readings on a PC. If the LED does not flash no further analysis is necessary. This feature is a real time-saver when large number of LogTags® are being used.

## Small and robust

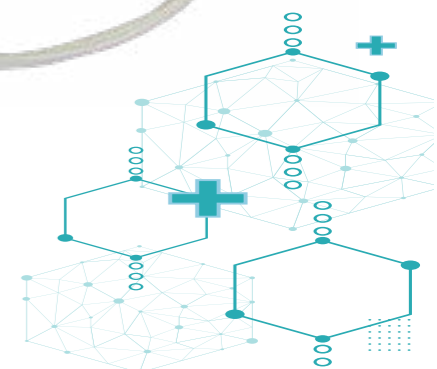
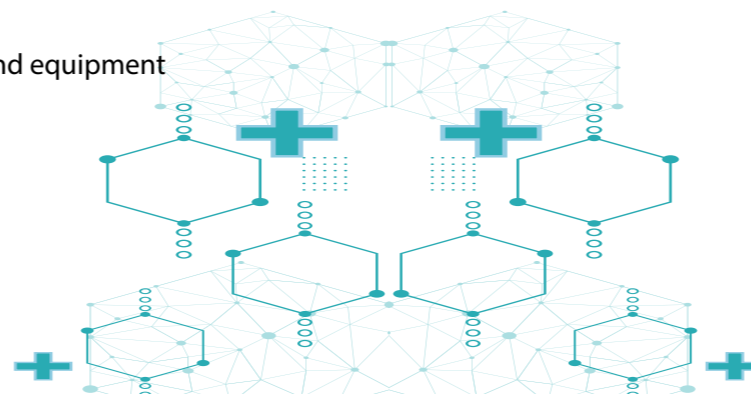
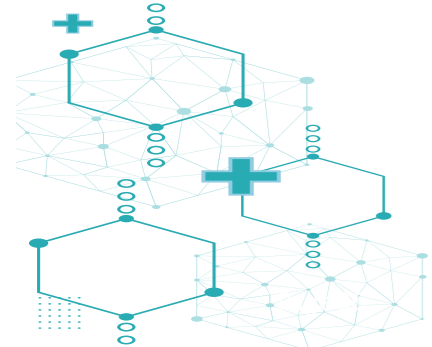
The LogTag® is incredibly small considering its features and its robust polycarbonate housing will protect it from external shocks.

## Other features:

- Visual alarm (LED) indicates temperature limit violations
- Start the logger with your PC or with the logger’s ‘Start’ button
- Set a start delay to avoid recording unnecessary readings
- Record an inspection mark in the log by pushing the ‘Start’ button
- Optional clearing of alert indication by push button
- ‘Low Battery’ warning indication in software
- The hole in the LogTag’s® housing makes it easy to hang or attach.

## Technical details

Temperature range:	-40°C ~ +85°C
Resolution:	< 0.1°C for -40°C ~ +40°C < 0.2°C for +40°C ~ +80°C
Accuracy:	Better than ±0.5°C for -10°C ~ +40°C. Better than ±0.7°C for -10°C ~ -30°C & +40°C ~ +60°C Better than ±0.8°C for -30°C ~ -40°C & +60°C ~ +80°C
Log size:	8,000 readings
Sensor reaction time:	Typically less than 5 minutes (T90) in moving air
Sampling rate:	Adjustable, 1 minute to several hours
Power source:	Onboard 3V Lithium battery
Battery life:	Average 2 - 3 years of normal use
Size:	86mm (L) x 54.5mm (W) x 8.6mm (H)
Weight:	35g
Case Material:	Polycarbonate



## Rollog Temperature Monitor



### Kits = Software + Reader + Case + Thermocron

The eTemperature software, reader, case and thermocron are supplied as a kit. The software can be freely copied onto multiple PCs and the reader moved between PCs. Additional loggers and readers may be purchased separately.

### eTemperature Software

eTemperature allows you to quickly and easily:

- Setup the Thermocron's sample rate, start delay, high and low alarm limits, and rollover option
- Download the results from the Thermocron to the PC
- Display the results as a table
- Display the results as a graph. The graph supports panning and zooming to easily identify problems
- Save results for later recall
- Export results to Microsoft Excel, Microsoft Word, and email results.

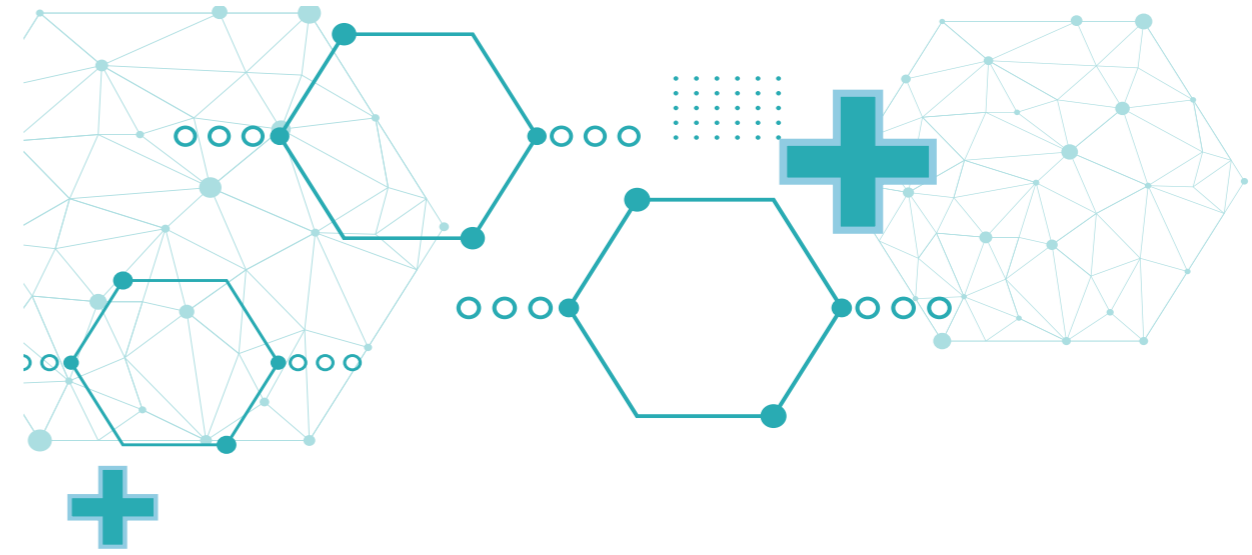
### USB Reader

The USB reader provides a fast and easy connection between the Thermocron and PC. It also has two connectors for the Thermocron.

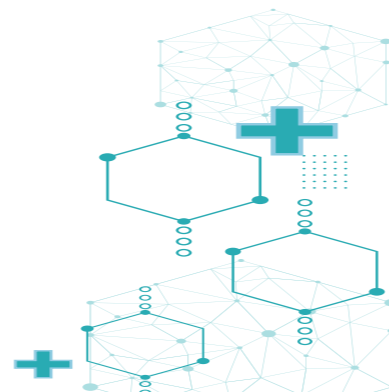
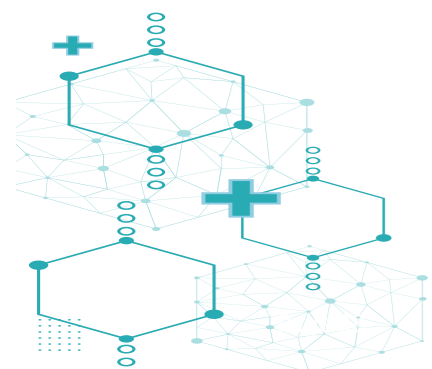
Rollog temperature loggers (thermocrons) are a thermometer with memory. They continually monitor the temperature and then record the date, time and temperature in memory. These readings can be then downloaded to a computer to be viewed, saved and reloaded at a later date.

This allows you to know exactly what the temperature was at all times. You can determine if your goods are usable, if something is too hot or cold, or to prove that everything is acceptable. The date and time information allows you to know exactly when a problem occurs and can often answer the why and when questions.

The thermocrons are constructed of stainless steel and are almost indestructible. They are also water resistant so they can be washed, submersed and sterilised.



## SECTION 6 AFTER SALES & ACCESSORIES





# Preventative Maintenance

## What is Preventative Maintenance?

A refrigerator or freezer is one of the hardest working appliances in our workplace - it is working 24 hours a day, 365 days a year without taking a rest and little attention is usually given to it. Rollex Medical have a comprehensive Preventative Maintenance Programme which can significantly increase the life and efficiency of your refrigeration equipment. By implementing routine preventative maintenance, you can save up to 10 percent on refrigeration energy costs and all refrigeration equipment needs preventative maintenance to keep it in the best operating condition. Good service can also mean the difference between a few mechanical malfunctions or continuous problems.



## Extended Warranty

Rollex Medical offer a 3 Year Extended Warranty if you sign up for our Preventative Maintenance Programme. The Preventative Maintenance Programme also entitles you to FREE telephone support for any adjustments to the refrigerator/freezer that may be required from time to time.

Your Extended Warranty is valid for three years covering all Parts and Labour providing that:

1. Preventative Maintenance is carried out annually during the warranty period
2. A Power Surge Protector or Uninterrupted Power Supply is fitted to protect the unit
3. A completed Warranty Document is filled out and returned to Rollex Medical (NZ) Ltd

If the conditions above are not carried out, then the standard warranty of 12 months from date of purchase applies.

## Preventative Maintenance Programme

Our skilled technicians will complete a comprehensive 20 point checklist and also arrange for complete repairs if required.

An example of the service duties includes:

- Clean and check condenser
- Check interior and exterior fans
- Check piping for damage
- Check interior/exterior lighting
- Check surge protection
- Check drains are clear
- Clean compressor and surrounding area
- Check test accuracy (data log test)
- Clean under, behind and around unit
- Check clearance around fridge area
- Check door and seal for damage
- Check power cable is in good condition
- Check evaporator for icing
- Check interior airflow
- Check status and settings
- Check probe is in free air

# Battery Backup UPS

The Rollex UPS Series has been specially adapted for use on medical and other refrigerators by providing a clean, safe and regulated power supply and power correction factor. This provides extended battery backup time if a power cut occurs, and therefore protecting your valuable product.



## Multiple Configurations

Available in 1 or 2 string battery configuration allowing for a run time of up to 8 hours or more.\*

## High Efficiency

Minimal heat dissipation ensures maximum efficiency. Be sure to locate UPS in as cool environment as possible, as this will extend UPS life.

## Self Monitoring

All UPS models feature a self monitoring and fault diagnosis function, alerting you if a problem is detected.

## Power Factor Correction

Improves power factor on refrigerators, reducing the load of high-current compressor starts and extending the life of the components and saving power.

\* Run time calculated based on first year use testing by an independent tester on a Vaccine Fridge. Battery degradation will occur over the battery life and therefore fridge run times will reduce over the years. Batteries can easily be changed in the future.

Fridge Model or Equivalent	Door Type	Single String 2k UPS 7Ah approx. runtime	Double String UPS 9Ah approx. runtime
Small Fridge (150L)	Glass	2hrs 46m	8hrs 15m
Large Fridge (250L)	Glass	2hrs 46m	8hrs 22m
Small Fridge (150L)	Solid	2hrs 47m	8hrs 45m
Large Fridge (250L)	Solid	2hrs 38m	10hrs 2m
Large Fridge (350L)	Solid	3hrs 25m	10hrs 1m

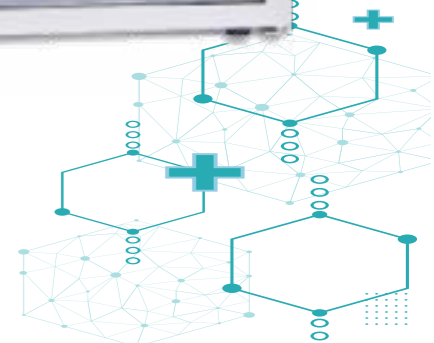
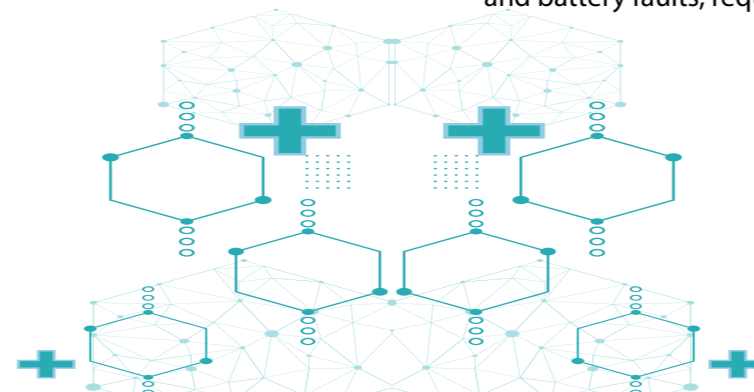
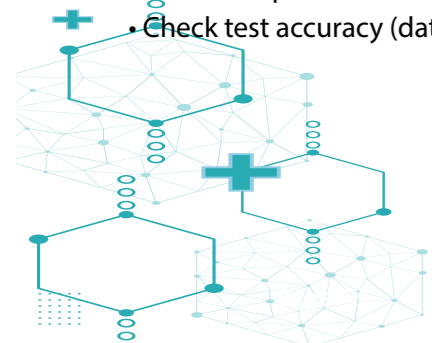
Fridge average runtimes calculated by independent tester in recommended ambient conditions for refrigerators.

## Surge Protection

Built in surge protection helps protect your medical fridge from dangerous power spikes and surges such as blackouts and lightning strikes.

## Advanced Microprocessor Controller

The advanced microprocessor controller and LCD display make the 2kVA UPS simple and easy to understand with available notifications for power loss and battery faults, requiring no user maintenance.



# Rollexx Outlet Surge Protectors

Power related problems are the number one cause of damage to equipment and lost data (damage not covered by product warranties). We recommend Belkin surge protectors which are built to the highest standards and are backed by a genuine lifetime product replacement warranty.

## Standard Range

SurgeMaster Single Surge Protector  
SurgeCube Double Surge Protector

Specifications: 2.40 kVA - 1181 J - 250 V AC Input - 250 V AC Output

- Surge Protected AC Outlets
- EMI/RFI Noise Filtration: 150kHz~100MHz: Electromagnetic interference/ radio frequency interference causes AC line contamination.
- Joule Rating: 1181J
- Protected and Earthed Indicators
- Belkin's Lifetime Warranty





# Rollex MEDICAL

NSW, QLD, ACT, WA Sales Office  
11 Vangeli Street, Arndell Park, NSW 2148

VIC, TAS, SA, NT Sales Office  
3/16 Curie Court, Seaford, VIC 3198

Nationwide Phone: 1300 880 441  
Nationwide Fax: 1300 880 451

Email Sales:  
[sales@rollexmedical.com](mailto:sales@rollexmedical.com)

Email Service:  
[service@rollexmedical.com](mailto:service@rollexmedical.com)

[www.rollexmedical.com.au](http://www.rollexmedical.com.au)

